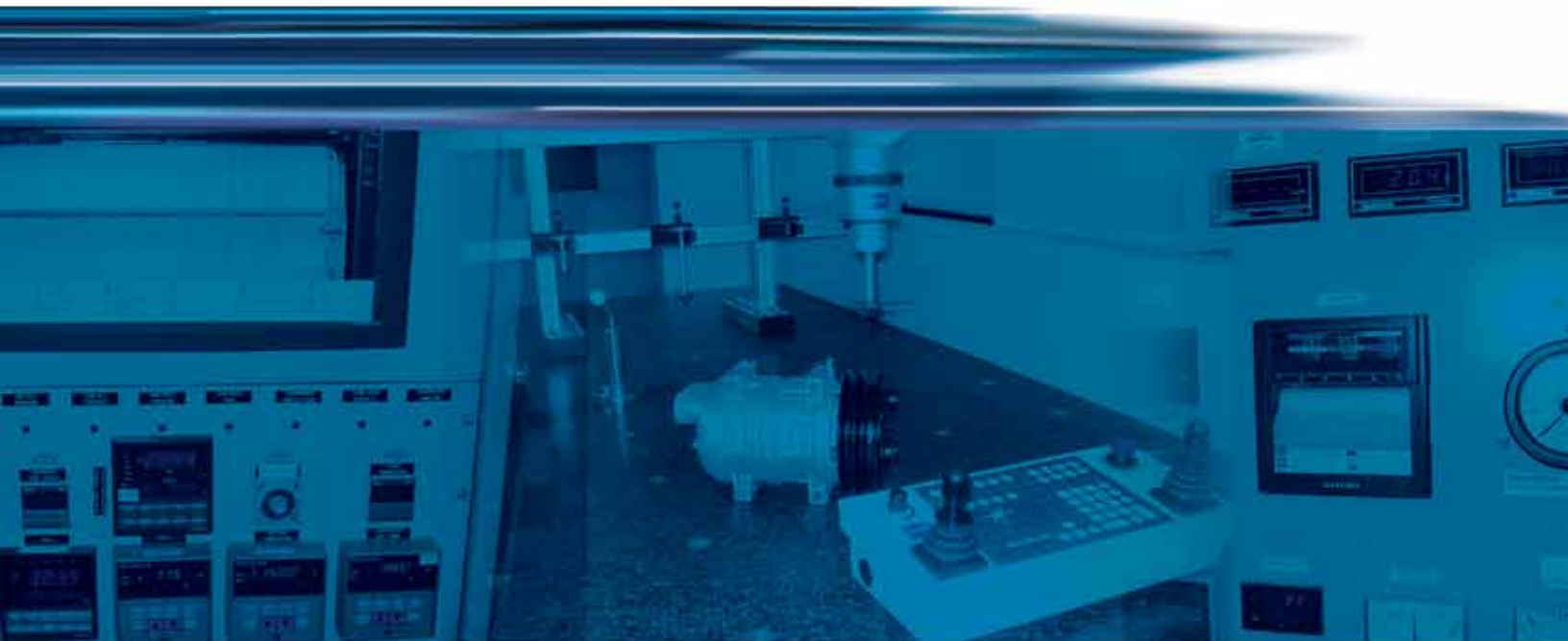


QUE PRODUCTS, LLC



CATALOG

UPDATED SEPTEMBER 2011



UNITED IN QUALITY



QUE

PRODUCTS, LLC

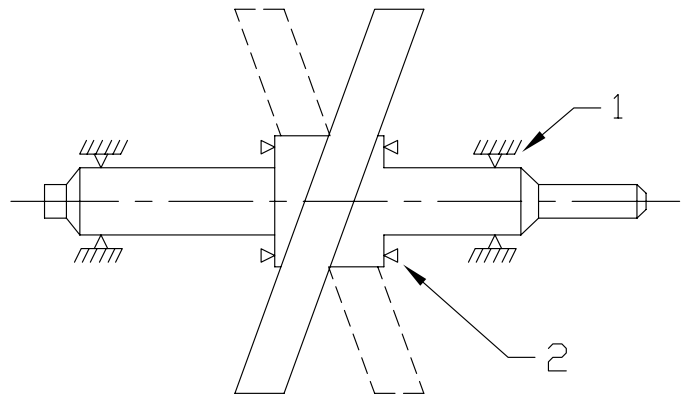
QUE PRODUCTS, LLC. IS THE
GLOBAL SUPPLIER OF QUALITY AIR
CONDITIONING COMPRESSORS
AND RELATED PRODUCTS FOR
THE AIR CONDITIONING AND
REFRIGERATION OEM AND
AFTERMARKET INDUSTRIES.
AS A PARTNER OF TCCI,
QUE PRODUCTS IS BACKED BY A
50 YEAR TRADITION OF
EXCELLENCE, WITH A USA BASED
LABORATORY DEDICATED TO
PROVIDING A TEAM OF TOP
ENGINEERS AND EXPANSIVE
TESTING FACILITIES TO ENSURE
YOU THE FINEST QUALITY.
QUE PRODUCTS OFFERS A
WIDE VARIETY OF QUALITY AIR
CONDITIONING COMPRESSORS
FOR AUTOMOTIVE, BUS,
HEAVY DUTY TRUCK,
OFF-ROAD, MILITARY AND R404A
REFRIGERATION APPLICATIONS.



SWASH PLATE SYSTEM

THE DRIVESHAFT IS SUPPORTED BY TWO RADIAL BEARINGS AND TWO THRUST BEARINGS. AS THE SWASH PLATE RECIPROCATES THROUGH THE ROTATION OF THE DRIVE SHAFT, THE PISTONS ARE DRIVEN BACK AND FORTH.

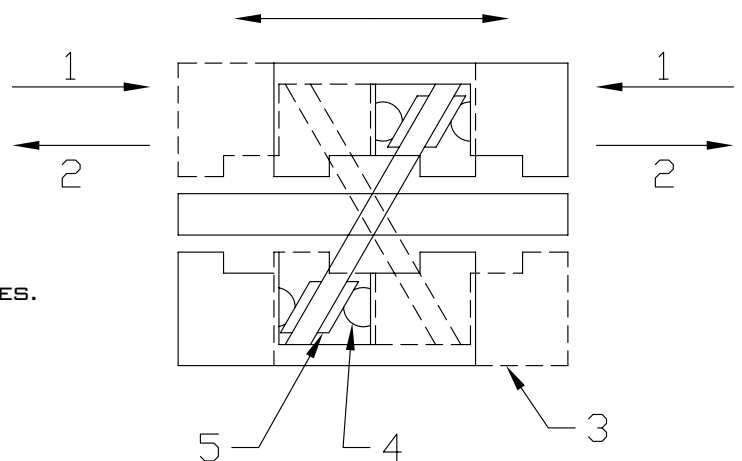
1. RADIAL BEARING
2. THRUST BEARING



PISTON DRIVE SYSTEM

THE PISTONS IN THE CYLINDERS ARE MOUNTED ON THE SWASH PLATE THROUGH A DRIVE BALL AND SHOE DISK. EACH PISTON HAS A COMPRESSION HEAD AT EACH END. SWASH PLATE ROTATION RESULTS IN RECIPROCATING PISTON MOVEMENT PARALLEL TO THE DRIVESHAFT. THE CYLINDERS ARE ARRANGED AT INTERVALS AROUND THE DRIVESHAFT, PROVIDING 5 FRONT AND 5 REAR BORES.

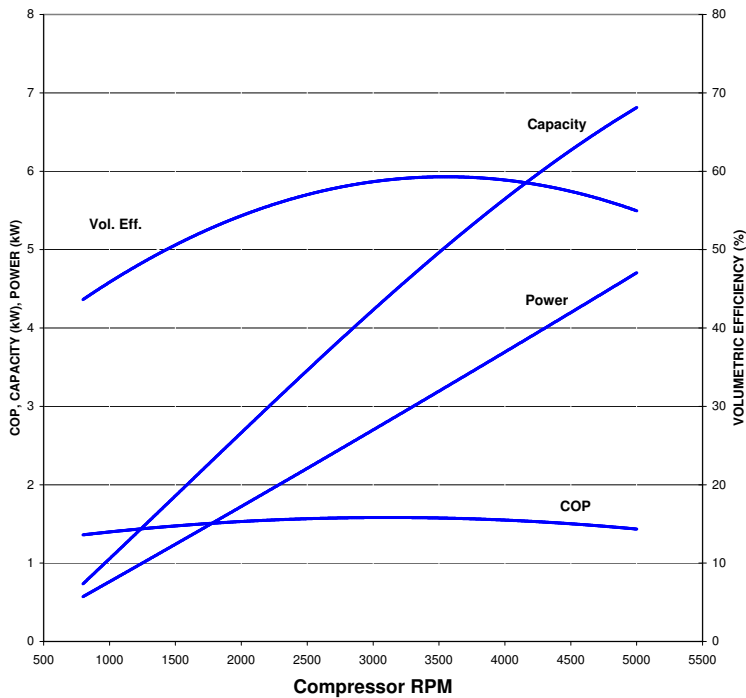
1. SUCTION
2. COMPRESSION
3. PISTONS
4. BALL
5. SHOE DISK



QP-08HD COMPRESSOR ALTERNATOR MOUNT

QP-08

Discharge: 1.52 MPag, Suction: .182 MPag
S.H. / S.C. : 10 / 5 deg K



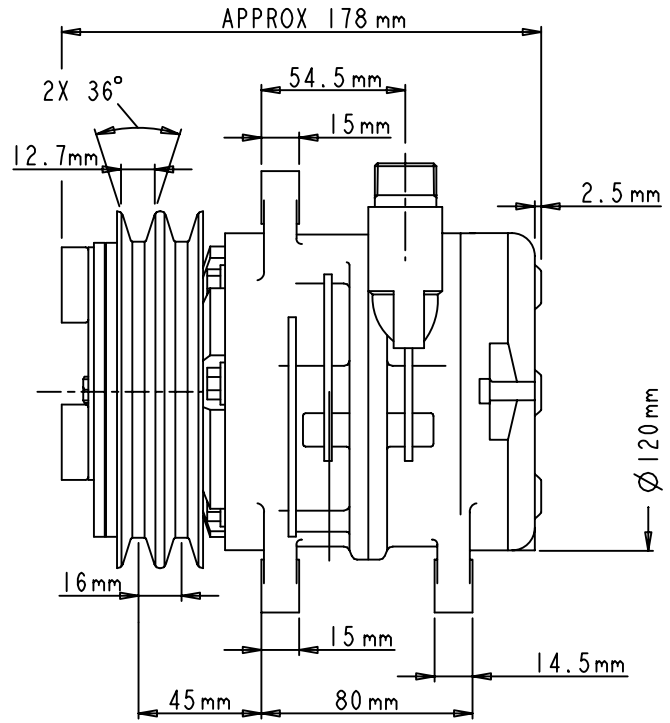
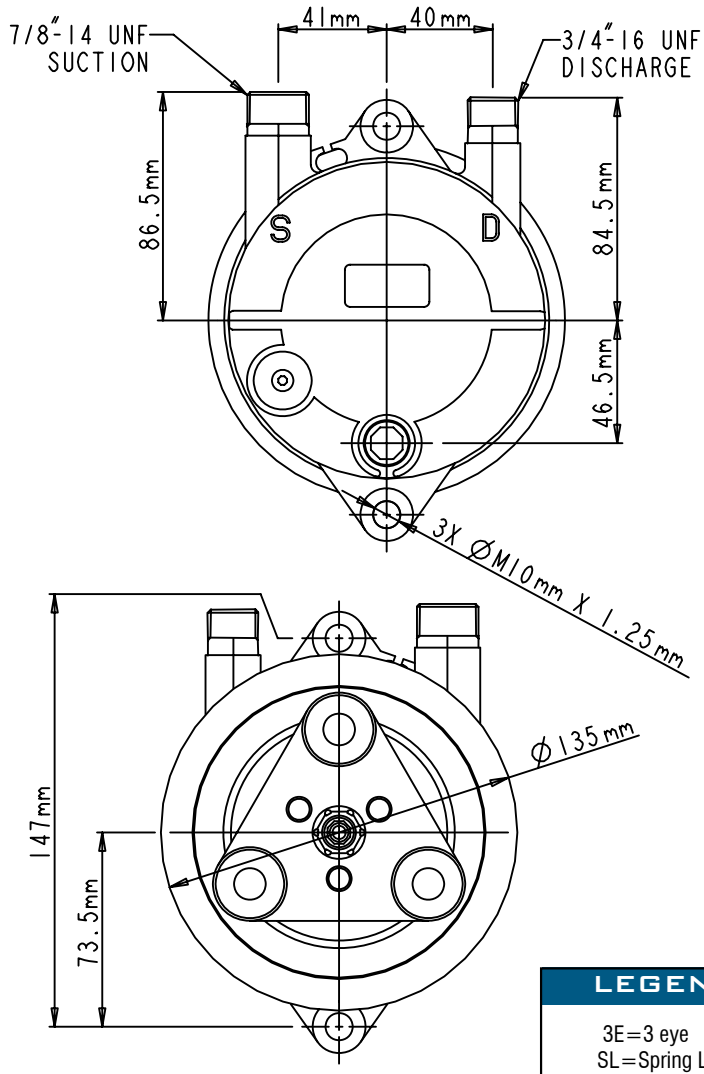
COMPRESSOR SPECIFICATIONS

Model	QP-08HD
Type	Swash Plate
Number of Cylinders	6
Bore	36 mm (1.42 in)
Stroke	13.4 mm (0.53 in)
Displacement	82 cm ³ (5 cu. in)
Permissible Speed	700-6000 rpm
Refrigerant	R-134a
Lubricant	PAG 46
Oil Charge	150+20 cm ³
Total Weight	6.4 kg (14 lbs)

MAGNETIC CLUTCH SPECIFICATIONS

Type	Electromagnetic Single Plate Dry Clutch
Rated	Voltage 12 V DC or 24 V DC
Belt	2A Groove
Current Consumption	3.75 amperes (max)
Static Torque	Initial: 35 N•m (3.5 kgfm) After burnishing: 49 N•m (5 kgfm)
Rotation	CW/CCW
Weight of Clutch	2.2 kg (4.9 lbs)

QP-08HD



LEGEND

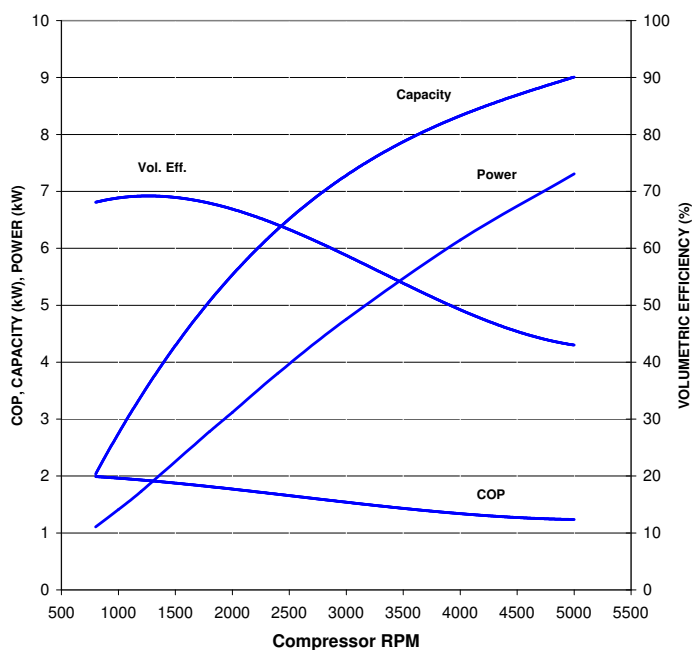
3E=3 eye
SL=Spring Leaf

COMPRESSOR ASSEMBLY				COMPRESSOR		MANIFOLD		CLUTCH			
QUE PRODUCTS NUMBER	CROSS REFERENCE NUMBER	CROSS REFERENCE	CROSS REFERENCE	TYPE	MOUNT STYLE	FITTING TYPE	FITTING DESCRIPTION	PULLEY DIAMETER (MM)	PULLEY TYPE	NOTES	VOLTAGE (V)
QP08-1138	2521138	488-42070	435-52070	HD	Alternator	BP	V - 3/4 x 7/8	125	2A	SL	12
QP08-1139	2521139	488-42072	435-52072	HD	Alternator	BP	V - 3/4 x 7/8	135	2A	SL	12
QP08-1256	2521256	488-42017	435-52017	HD	Alternator	BP	V - 3/4 x 7/8	125	2A	3E	12
QP08-1257	2521257	488-42081	435-52081	HD	Alternator	BP	V - 3/4 x 7/8	123	6PV	3E	12
QP08-1269	2521269	488-42087	435-52087	HD	Alternator	BP	V - 3/4 x 7/8	123	8PV	3E	12
QP08-1306	2521306	488-42085	435-52085	HD	Alternator	BP	V - 3/4 x 7/8	135	2A	3E	24
QP08-1261	2521261	488-42080	435-52080	HD	Alternator	V - 3/4 x 7/8	N/A	123	4PV	3E	12
QP08-1388	2521388	488-42083	435-52083	HD	Alternator	BP	V - 3/4 x 7/8	135	2A	3E	12

QP-08HD COMPRESSOR EAR MOUNT

QP-08

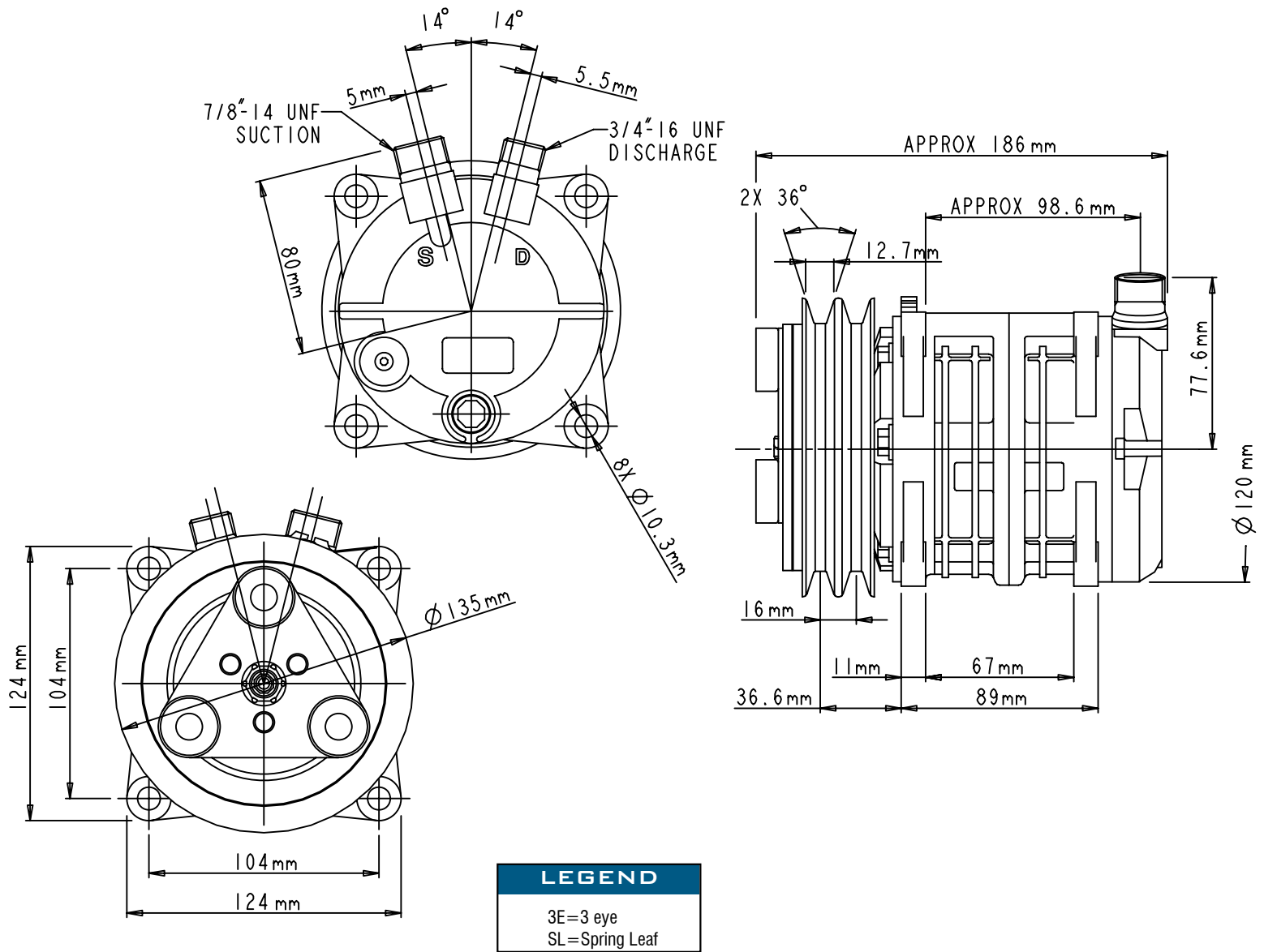
Discharge: 1.52 MPag, Suction: .182 MPag
S.H. / S.C. : 10 / 5 deg K



COMPRESSOR SPECIFICATIONS	
Model	QP-08HD
Type	Swash Plate
Number of Cylinders	6
Bore	36 mm (1.42 in)
Stroke	13.4 mm (0.53 in)
Displacement	82 cm ³ (5 cu. in)
Permissible Speed	700-6000 rpm
Refrigerant	R-134a
Lubricant	PAG 46
Oil Charge	150+20 cm ³
Total Weight	6.4 kg (14 lbs)

MAGNETIC CLUTCH SPECIFICATIONS	
Type	Electromagnetic Single Plate Dry Clutch
Rated	Voltage 12 V DC or 24 V DC
Belt	Ply "V" 6K Type
Current Consumption	3.75 amperes (max)
Static Torque	Initial: 35 N•m (3.5 kgfm) After burnishing: 49 N•m (5 kgfm)
Rotation	CW/CCW
Weight of Clutch	2.2 kg (4.9 lbs)

QP-08HD

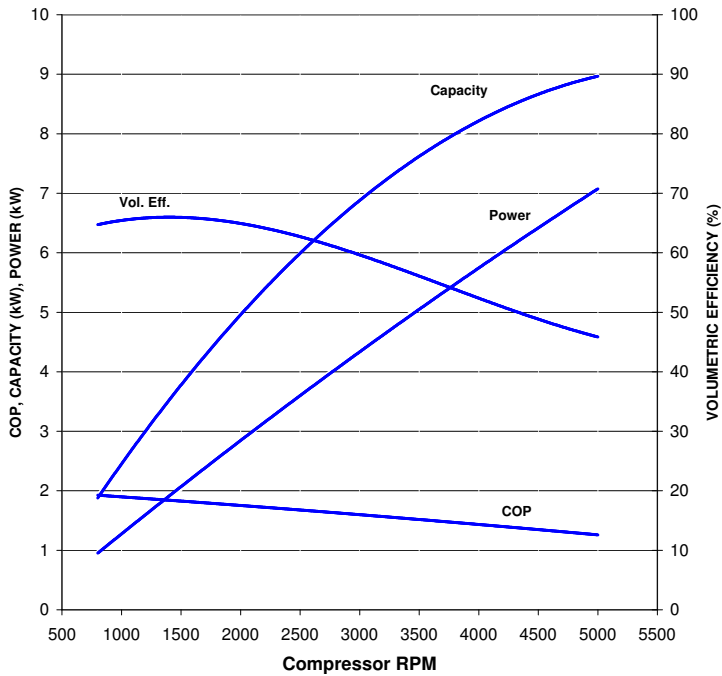


COMPRESSOR ASSEMBLY				COMPRESSOR		MANIFOLD		CLUTCH			
QUE PRODUCTS NUMBER	CROSS REFERENCE NUMBER	CROSS REFERENCE	CROSS REFERENCE	TYPE	MOUNT STYLE	FITTING TYPE	FITTING DESCRIPTION	PULLEY DIAMETER (MM)	PULLEY TYPE	NOTES	VOLTAGE (V)
QP08-1135	2521135	488-42015	435-52015	HD	Ear	Monolithic	V - 3/4 x 7/8	135	2A	3E	24
QP08-1136	2521136	488-42021	435-52021	HD	Ear	Monolithic	V - 3/4 x 7/8	135	2A	3E	12
QP08-1137	2521137	488-42038	435-52038	HD	Ear	Monolithic	V - 3/4 x 7/8	123	6PV	3E	12
QP08-1307	2521307	488-42033	435-52033	HD	Ear	Monolithic	V - 3/4 x 7/8	125	2A	SL	12
QP08-1614	2521614	488-42036	435-52036	HD	Ear	Monolithic	V - 3/4 x 7/8	125	2A	SL	24

QP-13HA COMPRESSOR EAR MOUNT

QP-13 HA

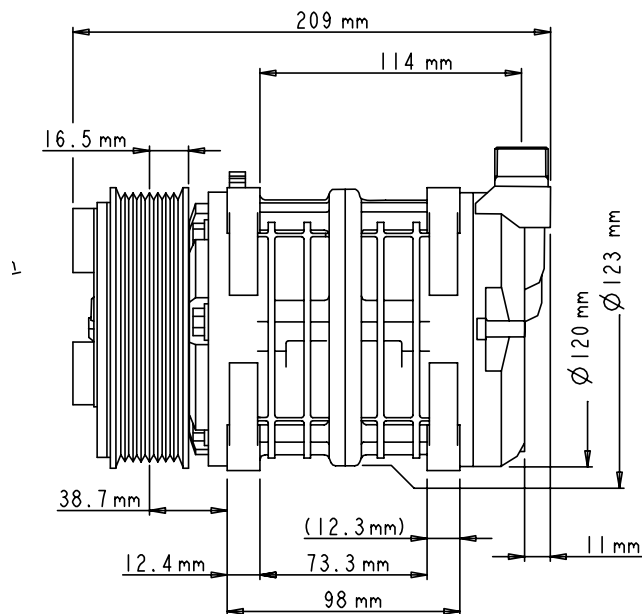
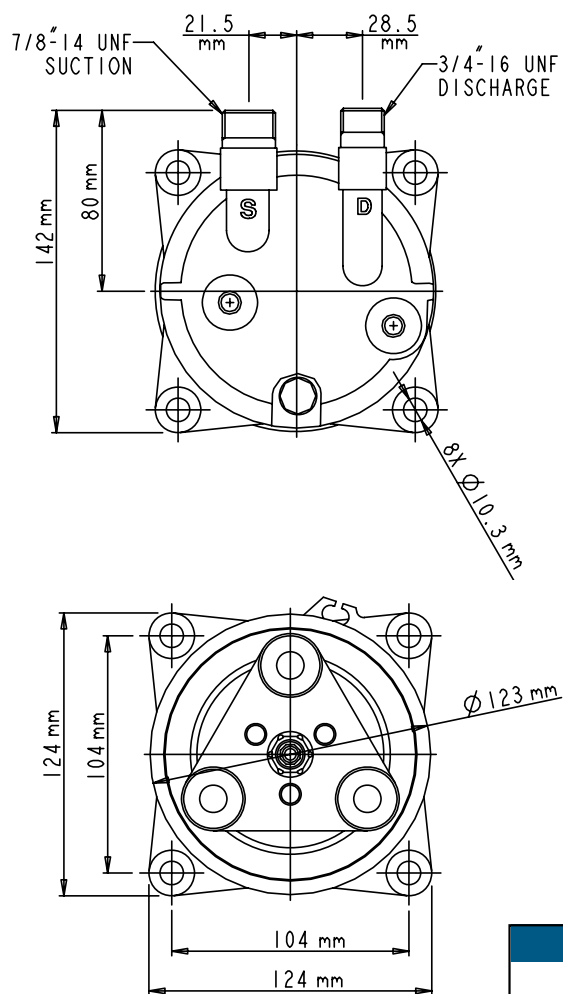
Discharge: 1.52 MPag, Suction: .182 MPag
S.H. / S.C. : 10 / 5 deg K



COMPRESSOR SPECIFICATIONS	
Model	QP-13HA
Type	Swash Plate
Number of Cylinders	6
Bore	36 mm (1.42 in)
Stroke	21.4 mm (0.84 in)
Displacement	131 cm ³ (8 cu. in)
Permissible Speed	700-6000 rpm
Refrigerant	R-134a
Lubricant	PAG 46
Oil Charge	150+20 cm ³
Total Weight	6.7 kg (14.7 lbs)

MAGNETIC CLUTCH SPECIFICATIONS	
Type	Electromagnetic Single Plate Dry Clutch
Rated	Voltage 12 V DC or 24 V DC
Belt	Ply "V" 6K Type
Current Consumption	3.75 amperes (max)
Static Torque	Initial: 35 N•m (3.5 kgfm) After burnishing: 49 N•m (5 kgfm)
Rotation	CW/CCW
Weight of Clutch	2.25 kg (5.0 lbs)

QP-13HA



LEGEND

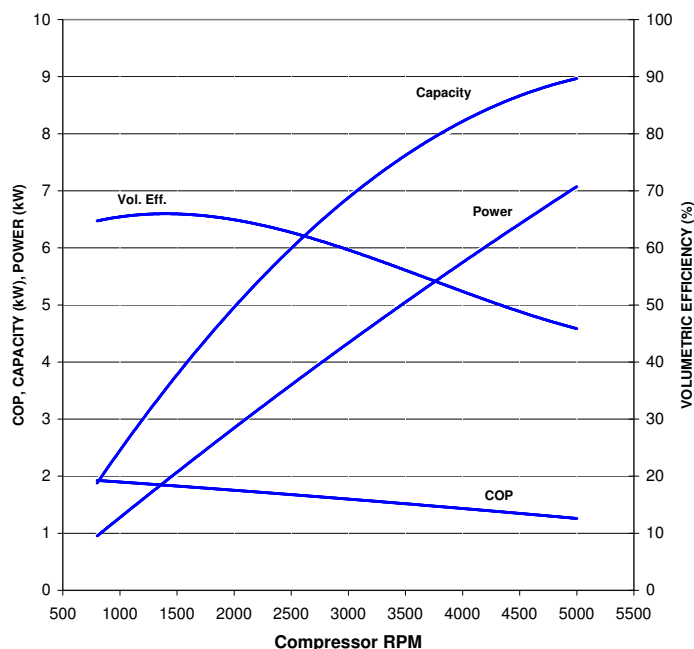
3E=3 eye
SL=Spring Leaf

COMPRESSOR ASSEMBLY				COMPRESSOR		MANIFOLD		CLUTCH			
QUE PRODUCTS NUMBER	CROSS REFERENCE NUMBER	CROSS REFERENCE	CROSS REFERENCE	TYPE	MOUNT STYLE	FITTING TYPE	FITTING DESCRIPTION	PULLEY DIAMETER (MM)	PULLEY TYPE	NOTES	VOLTAGE (V)
QP13-1142	2521142	488-42121	435-52121	HA	Ear	Monolithic	V - 3/4 X 7/8	123	8PV	3E	12
QP13-1258	2521258	488-42114	435-52114	HA	Ear	Monolithic	V - 3/4 X 7/8	123	6PV	3E	12
QP13-1309	2521309	488-42120	435-52120	HA	Ear	Monolithic	V - 3/4 X 7/8	125	2A	SL	12
QP13-1311	2521311	488-42310	435-52310	HA	Ear	Monolithic	V - 3/4 X 7/8	135	2A	SL	12
QP13-1452	2521452	488-42115	435-52115	HA	Ear	Monolithic	V - 3/4 x 7/8	135	2A.	3E	24
QP13-1143	2521143	488-42314	435-52314	HA	Ear	Monolithic	V - 3/4 x 7/8	123	6PV	SL	12
QP13-1497	2521497	488-42110	435-52110	HA	Ear	Monolithic	V - 3/4 X 7/8	135	2A	3E	12

QP-13HD COMPRESSOR EAR MOUNT

QP-13HD

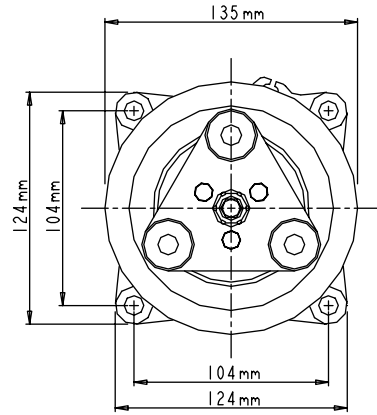
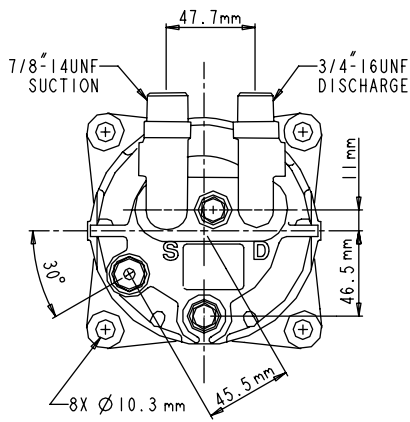
Discharge: 1.52 MPag, Suction: .182 MPag
S.H. / S.C. : 10 / 5 deg K



COMPRESSOR SPECIFICATIONS	
Model	QP-13HD
Type	Swash Plate
Number of Cylinders	6
Bore	36 mm (1.42 in)
Stroke	21.4 mm (0.84 in)
Displacement	131 cm ³ (8 cu. in)
Permissible Speed	700-6000 rpm
Refrigerant	R-134a
Lubricant	PAG 46
Oil Charge	150+20 cm ³
Total Weight	6.7 kg (14.7 lbs)

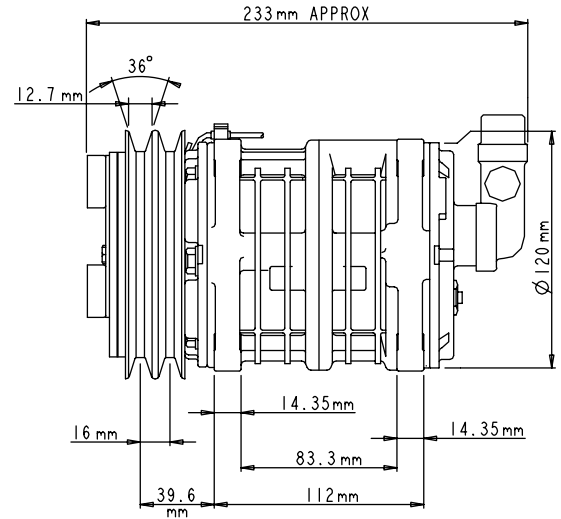
MAGNETIC CLUTCH SPECIFICATIONS	
Type	Electromagnetic Single Plate Dry Clutch
Rated	Voltage 12 V DC or 24 V DC
Belt	Ply "V" 6K Type
Current Consumption	3.75 amperes (max)
Static Torque	Initial: 35 N•m (3.5 kgfm) After burnishing: 49 N•m (5 kgfm)
Rotation	CW/CCW
Weight of Clutch	2.25 kg (5.0 lbs)

QP-13HD



LEGEND

3E=3 eye
SL=Spring Leaf

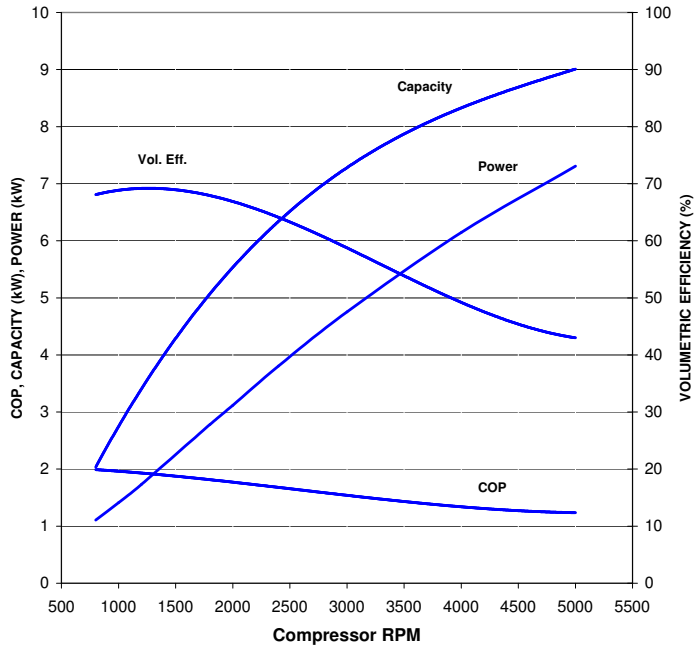


COMPRESSOR ASSEMBLY				COMPRESSOR		MANIFOLD		CLUTCH			
QUE PRODUCTS NUMBER	CROSS REFERENCE NUMBER	CROSS REFERENCE	CROSS REFERENCE	TYPE	MOUNT STYLE	FITTING TYPE	FITTING DESCRIPTION	PULLEY DIAMETER (MM)	PULLEY TYPE	NOTES	VOLTAGE (V)
QP13-1144	2521144	488-44038	435-54038	HD	Ear	Bolt	V - 3/4 X 7/8	123	6PV	3E	12
QP13-1145	2521145	488-44070	435-54070	HD	Ear	Bolt	V - 3/4 X 7/8	135	2A	3E	12
QP13-1148	2521148	488-44234	435-54234	HD	Ear	Pad	H - Pad	123	8PV	3E	12
QP13-1149	2521149	488-44236	435-54236	HD	Ear	Pad	H - Pad	123	8PV	3E	24
QP13-1271	2521271	488-44010	435-54010	HD	Ear	Bolt	H - 1 X 14	135	2A	3E	12
QP13-1272	2521272	488-44014	435-54014	HD	Ear	Bolt	H - 1 X 14	123	8PV	3E	12
QP13-1273	2521273	488-44082	435-54082	HD	Ear	Bolt	H - 3/4 X 7/8	135	2A	3E	12
QP13-1274	2521274	488-44122	435-54122	HD	Ear	Bolt	H - 3/4 X 7/8	123	8PV	3E	12
QP13-1290	2521290	488-44012	435-54012	HD	Ear	Bolt	H - 1 X 14	135	2A	3E	24
QP13-1291	2521291	488-44071	435-54071	HD	Ear	Bolt	V - 3/4 X 7/8	135	2A	3E	24
QP13-1292	2521292	488-44074	435-54074	HD	Ear	Bolt	H - 3/4 X 7/8	135	2A	3E	24
QP13-1302	2521302	488-44120	435-54120	HD	Ear	Bolt	V - 3/4 X 7/8	123	8PV	3E	12
QP13-1310	2521310	488-44039	435-54039	HD	Ear	Bolt	H - 3/4 X 7/8	123	6PV	3E	12
QP13-1312	2521312	488-44041	435-54041	HD	Ear	Bolt	H - 3/4 X 7/8	125	2A	SL	12
QP13-1446	2521446	488-44210	435-54210	HD	Ear	Pad	H - Pad	135	2A	3E	12
QP13-1460	2521460	488-44123	435-54123	HD	Ear	Bolt	H - 3/4 X 7/8	123	8PV	3E	24
QP13-1501	2521501	488-44218	435-54218	HD	Ear	Pad	H - Pad	123	6PV	3E	12
QP13-1502	2521502	488-44220	435-54220	HD	Ear	Pad	H - Pad	123	6PV	3E	24
QP13-1503	2521503	488-44222	435-54222	HD	Ear	Pad	H - Pad	125	2A	SL	12
QP13-1504	2521504	488-44370	435-54370	HD	Ear	Bolt	V - 3/4 x 7/8	135	2A	SL	12
QP13-1150	2521150	488-44320	435-54320	HD	Ear	Bolt	V - 3/4 x 7/8	123	8PV	SL	12
QP13-1668	N/A	N/A	N/A	HD	Ear	Pad	H - Pad	135	2A	3E	24
QP13-1505	2521505	488-44382	435-54382	HD	Ear	Bolt	H - 3/4 X 7/8	135	2A	SL	12

QP-15HD COMPRESSOR DIRECT & EAR MOUNT

QP-15HD

Discharge: 1.52 MPag, Suction: .182 MPag
S.H. / S.C. : 10 / 5 deg K



COMPRESSOR SPECIFICATIONS	
Model	QP-15HD
Type	Swash Plate
Number of Cylinders	6
Bore	36 mm (1.42 in)
Stroke	24 mm (0.94 in)
Displacement	146 cm ³ (8.9 cu. in)
Permissible Speed	700-6000 rpm
Refrigerant	R-134a
Lubricant	PAG 46
Oil Charge	150+20 cm ³
Total Weight	6.6 kg (14.7 lbs)

MAGNETIC CLUTCH SPECIFICATIONS	
Type	Electromagnetic Single Plate Dry Clutch
Rated	Voltage 12 V DC or 24 V DC
Belt	2A Groove
Current Consumption	3.75 amperes (max)
Static Torque	Initial: 35 N•m (3.5 kgfm) After burnishing: 49 N•m (5 kgfm)
Rotation	CW/CCW
Weight of Clutch	2.28 kg (5 lbs)

LEGEND

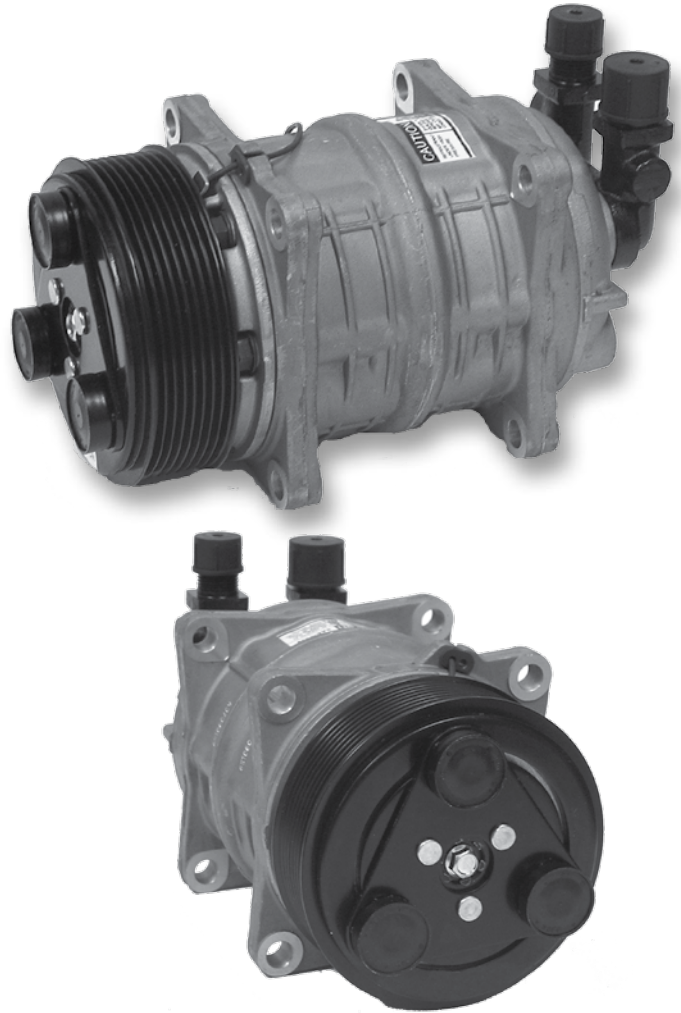
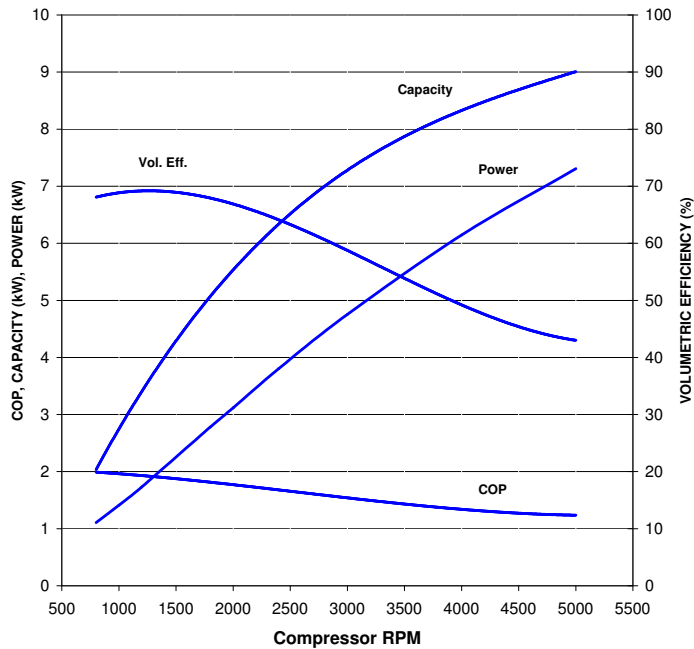
3E=3 eye
SL=Spring Leaf
OH=Overhang
WP=Weather Pack
WD=W/Diode

COMPRESSOR ASSEMBLY				COMPRESSOR		MANIFOLD		CLUTCH			
QUE PRODUCTS NUMBER	CROSS REFERENCE NUMBER	CROSS REFERENCE	CROSS REFERENCE	TYPE	MOUNT STYLE	FITTING TYPE	FITTING DESCRIPTION	PULLEY DIAMETER (MM)	PULLEY TYPE	NOTES	VOLTAGE (V)
QP15-1152	2521152	488-45011	435-55011	HD	Ear	Bolt	V - 3/4 X 7/8	135	2A	3E	12
QP15-1153	2521153	488-45015	435-55015	HD	Ear	Bolt	V - 3/4 X 7/8	135	2A	3E	24
QP15-1154	2521154	488-45017	435-55017	HD	Ear	Bolt	H - 3/4 X 7/8	135	2A	3E	24
QP15-1155	2521155	488-45018	435-55018	HD	Ear	Bolt	V - 3/4 X 7/8	125	2A	SL	12
QP15-1156	2521156	488-45019	435-55019	HD	Ear	Bolt	V - 3/4 X 7/8	123	6PV	3E	12
QP15-1157	2521157	488-45021	435-55021	HD	Ear	Monolithic	V - 3/4 X 7/8	135	2A	3E	12
QP15-1160	2521160	488-45036	435-55036	HD	Ear	Bolt	H - 3/4 X 7/8	125	2A	SL	12
QP15-1161	2521161	488-45043	435-55043	HD	Ear	Monolithic	V - 3/4 X 7/8	125	2A	SL	12
QP15-1162	2521162	488-45047	435-55047	HD	Ear	Monolithic	V - 3/4 X 7/8	123	6PV	3E	12
QP15-1163	2521163	488-45056	435-55056	HD	Ear	Monolithic	V - 3/4 X 7/8	135	2A	3E	24
QP15-1168	2521168	488-45075	435-55075	HD	Ear	Bolt	H - 1 X 14	125	2A	SL	12
QP15-1171	2521171	488-45120	435-55120	HD	Ear	Bolt	V - 3/4 X 7/8	123	8PV	3E	12
QP15-1172	2521172	488-45121	435-55121	HD	Ear	Monolithic	V - 3/4 X 7/8	123	8PV	3E	12
QP15-1173	2521173	488-45126	435-55126	HD	Ear	Bolt	H - 1 X 14	123	8PV	3E	12
QP15-1175	2521175	488-45212	435-55212	HD	Ear	Pad	H - Pad	135	2A	3E	24
QP15-1176	2521176	488-45222	435-55222	HD	Ear	Pad	H - Pad	125	2A	SL	12
QP15-1178	2521178	488-45234	435-55234	HD	Ear	Pad	H - Pad	123	8PV	3E	12
QP15-1266	2521266	488-45122	435-55122	HD	Ear	Bolt	H - 3/4 X 7/8	123	8PV	3E	12
QP15-1316	2521316	488-45023	435-55023	HD	Ear	Bolt	V - 1 X 14	135	2A	3E	12
QP15-1317	2521317	488-45026	435-55026	HD	Ear	Bolt	V - 1 X 14	123	6PV	3E	12
QP15-1318	2521318	488-45027	435-55027	HD	Ear	Bolt	H - 3/4 X 7/8	123	6PV	3E	24
QP15-1319	2521319	488-45032	435-55032	HD	Ear	Bolt	V - 3/4 X 7/8	123	6PV	3E	24
QP15-1321	2521321	488-45039	435-55039	HD	Ear	Bolt	H - 1 X 14	135	2A	3E	12
QP15-1323	2521323	488-45068	435-55068	HD	Ear	Bolt	H - 3/4 X 7/8	123	6PV	3E	12
QP15-1326	2521326	488-45079	435-55079	HD	Ear	Bolt	V - 1 X 14	135	2A	3E	24
QP15-1332	2521332	488-45124	435-55124	HD	Ear	Bolt	V - 1 X 14	123	8PV	3E	12
QP15-1333	2521333	488-45125	435-55125	HD	Ear	Bolt	V - 3/4 X 7/8	123	8PV	3E	24
QP15-1334	2521334	488-45131	435-55131	HD	Ear	Monolithic	V - 3/4 X 7/8	123	8PV	3E	24
QP15-1337	2521337	488-45218	435-55218	HD	Ear	Pad	H - Pad	123	6PV	3E	12
QP15-1339	2521339	488-45321	435-55321	HD	Ear	Monolithic	V - 3/4 X 7/8	135	2A	SL	12

QP-15HD COMPRESSOR DIRECT & EAR MOUNT

QP-15HD

Discharge: 1.52 MPag, Suction: .182 MPag
S.H. / S.C. : 10 / 5 deg K



COMPRESSOR SPECIFICATIONS	
Model	QP-15HD
Type	Swash Plate
Number of Cylinders	6
Bore	36 mm (1.42 in)
Stroke	24 mm (0.94 in)
Displacement	146 cm ³ (8.9 cu. in)
Permissible Speed	700-6000 rpm
Refrigerant	R-134a
Lubricant	PAG 46
Oil Charge	150+20 cm ³
Total Weight	6.6 kg (14.7 lbs)

MAGNETIC CLUTCH SPECIFICATIONS	
Type	Electromagnetic Single Plate Dry Clutch
Rated	Voltage 12 V DC or 24 V DC
Belt	2A Groove
Current Consumption	3.75 amperes (max)
Static Torque	Initial: 35 N•m (3.5 kgfm) After burnishing: 49 N•m (5 kgfm)
Rotation	CW/CCW
Weight of Clutch	2.28 kg (5 lbs)

LEGEND

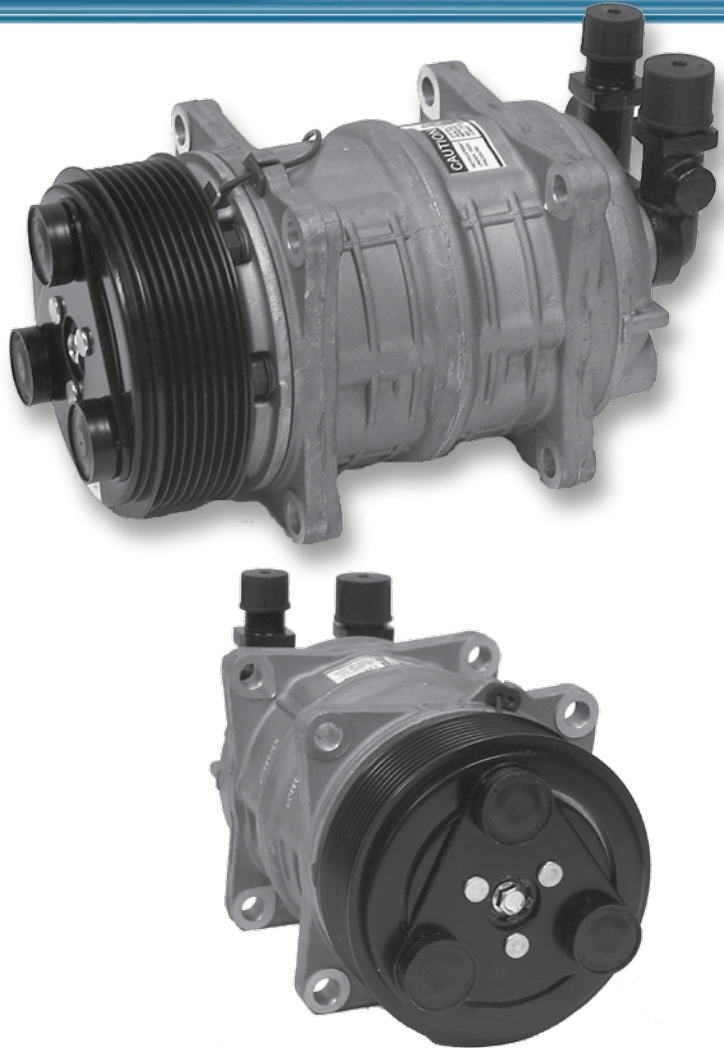
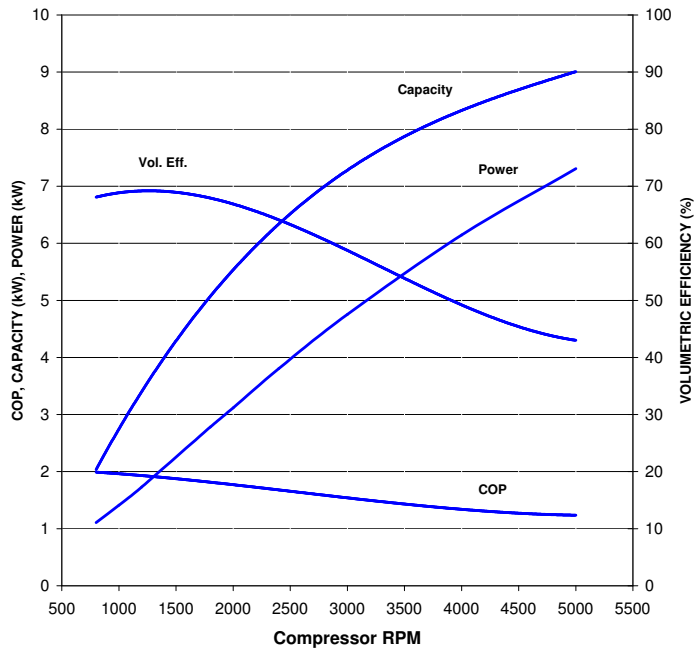
3E=3 eye
SL=Spring Leaf
WD=W/Diode

COMPRESSOR ASSEMBLY				COMPRESSOR		MANIFOLD		CLUTCH			
QUE PRODUCTS NUMBER	CROSS REFERENCE NUMBER	CROSS REFERENCE	CROSS REFERENCE	TYPE	MOUNT STYLE	FITTING TYPE	FITTING DESCRIPTION	PULLEY DIAMETER (MM)	PULLEY TYPE	NOTES	VOLTAGE (V)
QP15-1341	2521341	488-45339	435-55339	HD	Ear	Bolt	H - 1 X 14	135	2A	SL	12
QP15-1374	2521374	488-45029	435-55029	HD	Ear	Bolt	H - 1 X 14	135	2A	3E	24
QP15-1453	2521453	488-45330	435-55330	HD	Ear	Bolt	H - 3/4 X 7/8	135	2A	SL	12
QP15-1454	2521454	488-45323	435-55323	HD	Ear	Bolt	V - 1 X 14	135	2A	SL	12
QP15-1455	2521455	488-45311	435-55311	HD	Ear	Bolt	V - 3/4 X 7/8	135	2A	SL	12
QP15-1473	2521473	488-45129	435-55129	HD	Ear	Bolt	H - 1 X 14	123	8PV	3E	24
QP15-1479	2521479	488-45030	435-55030	HD	Ear	Bolt	H - 3/4 X 7/8	135	2A	3E	12
QP15-1510	2521510	488-45315	435-55315	HD	Ear	Bolt	V - 3/4 X 7/8	135	2A	SL	24
QP15-1511	2521511	488-45317	435-55317	HD	Ear	Bolt	H - 3/4 X 7/8	135	2A	SL	24
QP15-1513	2521513	488-45379	435-55379	HD	Ear	Bolt	V - 1 X 14	135	2A	SL	24
QP15-1526	2521526	488-45123	435-55123	HD	Ear	Bolt	H - 3/4 X 7/8	123	8PV	3E	24
QP15-1544	2521544	488-45059	435-55059	HD	Ear	Bolt	H - 3/4 X 7/8	135	2A	3E	12
QP15-1548	2521548	488-45128	435-55128	HD	Ear	Bolt	H - 3/4 X 7/8	123	8PV	3E	12
QP15-1555	2521555	488-45329	435-55329	HD	Ear	Bolt	H - 1 X 14	135	2A	SL	24
QP15-1602	2521602	488-45118	435-55118	HD	Ear	Monolithic	V - 3/4 X 7/8	123	8PV	3E	12
QP15-1605	2521605	488-45356	435-55356	HD	Ear	Monolithic	V - 3/4 X 7/8	135	2A	SL	24
QP15-1607	2521607	488-45220	435-55220	HD	Ear	Pad	H - Pad	125	2A	SL	24
QP15-1165	2521165	488-45061	435-55061	HD	Ear	Bolt	V - 3/4 X 7/8	159	VG	3E	24
QP15-1166	2521166	488-45063	435-55063	HD	Ear	Bolt	V - 3/4 X 7/8	125	1A	SL,OH	12
QP15-1167	2521167	488-45065	435-55065	HD	Ear	Bolt	V - 3/4 X 7/8	159	VG	3E	12
QP15-1168	2521168	488-45075	435-55075	HD	Ear	Bolt	H - 1 X 14	125	2A	SL	12
QP15-1170	2521170	488-45088	435-55088	HD	Direct	Bolt	V - 3/4 X 7/8	123	6PV	SL	12
QP15-1255	2521255	488-45238	435-55238	HD	Ear	Pad	H - Pad	123	6PV	SL	12
QP15-1266	2521266	488-45122	435-55122	HD	Ear	Bolt	H - 3/4 X 7/8	123	8PV	3E	12
QP15-1268	2521268	488-45081	435-55081	HD	Direct	Bolt	H - 3/4 X 7/8	159	VG	3E	24
QP15-1279	2521279	488-45073	435-55073	HD	Ear	Bolt	H - 3/4 X 7/8	159	VG	3E	24
QP15-1280	2521280	488-45082	435-55082	HD	Direct	Bolt	V - 3/4 X 7/8	123	8PV	3E	12
QP15-1281	2521281	488-45084	435-55084	HD	Direct	Bolt	H - 3/4 X 7/8	123	8PV	3E	12
QP15-1282	2521282	488-45092	435-55092	HD	Direct	Bolt	V - 3/4 X 7/8	135	2A	3E	12
QP15-1294	2521294	488-45090	435-55090	HD	Direct	Bolt	V - 3/4 X 7/8	135	2A	3E	24
QP15-1301	2521301	488-45077	435-55077	HD	Ear	Bolt	V - 3/4 X 7/8	135	2A	WP,WD	12
QP15-1324	2521324	488-45069	435-55069	HD	Ear	Bolt	V - 3/4 X 7/8	135	2A	WD,3E	12

QP-15HD COMPRESSOR DIRECT & EAR MOUNT

QP-15HD

Discharge: 1.52 MPag, Suction: .182 MPag
S.H. / S.C. : 10 / 5 deg K



COMPRESSOR SPECIFICATIONS

Model	QP-15HD
Type	Swash Plate
Number of Cylinders	6
Bore	36 mm (1.42 in)
Stroke	24 mm (0.94 in)
Displacement	146 cm ³ (8.9 cu. in)
Permissible Speed	700-6000 rpm
Refrigerant	R-134a
Lubricant	PAG 46
Oil Charge	150+20 cm ³
Total Weight	6.6 kg (14.7 lbs)

MAGNETIC CLUTCH SPECIFICATIONS

Type	Electromagnetic Single Plate Dry Clutch
Rated	Voltage 12 V DC or 24 V DC
Belt	2A Groove
Current Consumption	3.75 amperes (max)
Static Torque	Initial: 35 N•m (3.5 kgfm) After burnishing: 49 N•m (5 kgfm)
Rotation	CW/CCW
Weight of Clutch	2.28 kg (5 lbs)

LEGEND

3E=3 eye
SL=Spring Leaf
WD=W/Diode

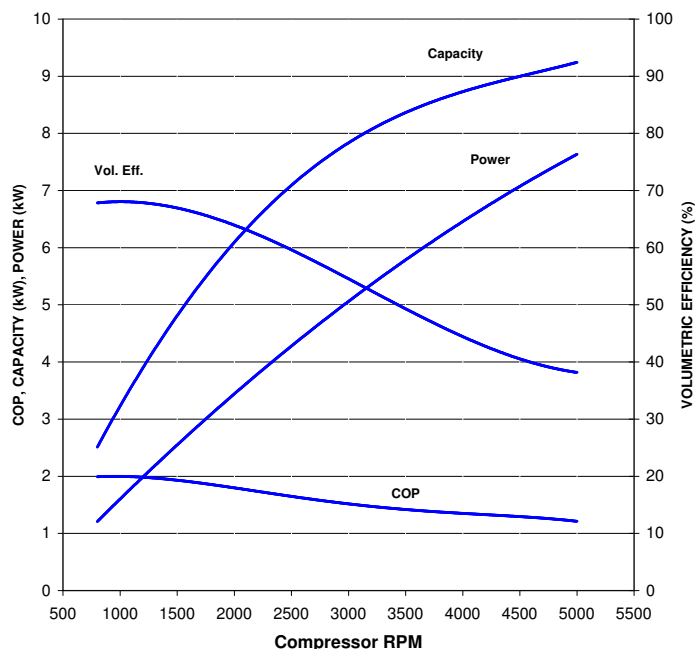
COMPRESSOR ASSEMBLY				COMPRESSOR		MANIFOLD		CLUTCH			
QUE PRODUCTS NUMBER	CROSS REFERENCE NUMBER	CROSS REFERENCE	CROSS REFERENCE	TYPE	MOUNT STYLE	FITTING TYPE	FITTING DESCRIPTION	PULLEY DIAMETER (MM)	PULLEY TYPE	NOTES	VOLTAGE (V)

QP15-1325	2521325	488-45071	435-55071	HD	Ear	Bolt	V - 3/4 X 7/8	135	2A	WD,3E	12
QP15-1329	2521329	488-45094	435-55094	HD	Ear	Bolt	V - 1 X 14	159	VG	3E	12
QP15-1330	2521330	488-45097	435-55097	HD	Ear	Bolt	H - 1 X 14	123	6PV	3E	12
QP15-1335	2521335	488-45141	435-55141	HD	Ear	Bolt	V - 3/4 X 7/8	123	8PV	SL	12
QP15-1338	2521338	488-45319	435-55319	HD	Ear	Bolt	V - 3/4 X 7/8	123	6PV	SL	12
QP15-1340	2521340	488-45322	435-55322	HD	Ear	Bolt	H - 3/4 X 7/8	123	8PV	SL	12
QP15-1387	2521387	488-45210	435-55210	HD	Ear	Pad	H - Pad	135	2A	3E	12
QP15-1158	2521158	N/A	N/A	HD	Ear	Monolithic	3/4 x 7/8	123	6PV	3E	12
QP15-1512	N/A	N/A	N/A	HD	Ear	Bolt	3/4 x 7/8	123	8PV	SL	12
QP15-1526	N/A	N/A	N/A	HD	Ear	Bolt	H - 3/4 X 7/8	123	8PV	3E	12
QP15-1561	N/A	N/A	N/A	HD	Ear	Bolt	V - 3/4 X 7/8	125	2A	SL	12
QP15-1576	N/A	N/A	N/A	HD	Ear	Pad	H - Pad	123	8PV	3E	24
QP15-1721	N/A	N/A	N/A	HD	Ear	Bolt	V - 1 X 14	152	2A	SHD	12
QP15-1732	N/A	N/A	N/A	HD	Ear	Bolt	H - 3/4 X 7/8	123	4PV	SL	12
QP15-1735	N/A	N/A	N/A	HD	Direct	Bolt	H - 3/4 X 7/8	123	4PV	SL	12
QP15-1737	N/A	N/A	N/A	HD	Ear	Bolt	V - 3/4 X 7/8	135	2A	SL	12
QP15-1738	N/A	N/A	N/A	HD	Ear	Bolt	H - 3/4 X 7/8	123	6PV	SL	12
QP15-1769	N/A	N/A	N/A	HD	Ear	Pad	H - Pad	135	2A	SL	12

QP-16HD COMPRESSOR EAR MOUNT

QP-16HD

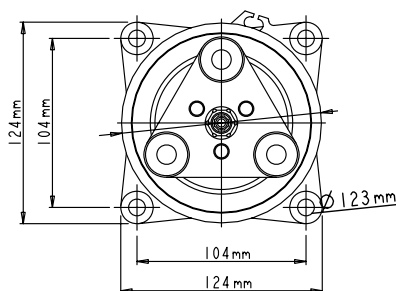
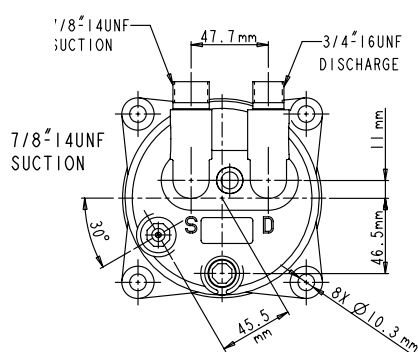
Discharge: 1.52 MPag, Suction: .182 MPag
S.H. / S.C. : 10 / 5 deg K



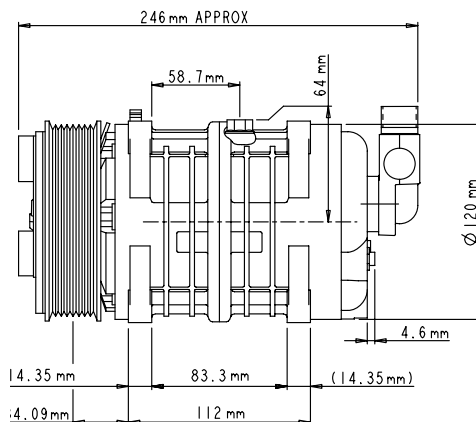
Model	QP-16HD
Type	Swash Plate
Number of Cylinders	6
Bore	36 mm (1.42 in)
Stroke	26.7 mm (1.05 in)
Displacement	163 cm ³ (9.95 cu. in)
Permissible Speed	700-6000 rpm
Refrigerant	R-134a
Lubricant	PAG 46
Oil Charge	180+20 cm ³
Total Weight	7.2 kg (15.9 lbs)

MAGNETIC CLUTCH SPECIFICATIONS	
Type	Electromagnetic Single Plate Dry Clutch
Rated	Voltage 12 V DC or 24 V DC
Belt	2A Groove
Current Consumption	3.75 amperes (max)
Static Torque	Initial: 35 N•m (3.5 kgfm) After burnishing: 49 N•m (5 kgfm)
Rotation	CW/CCW
Weight of Clutch	2.3 kg (5.1 lbs)

QP-16HD



LEGEND	
3E	= 3 eye
SL	= Spring Leaf

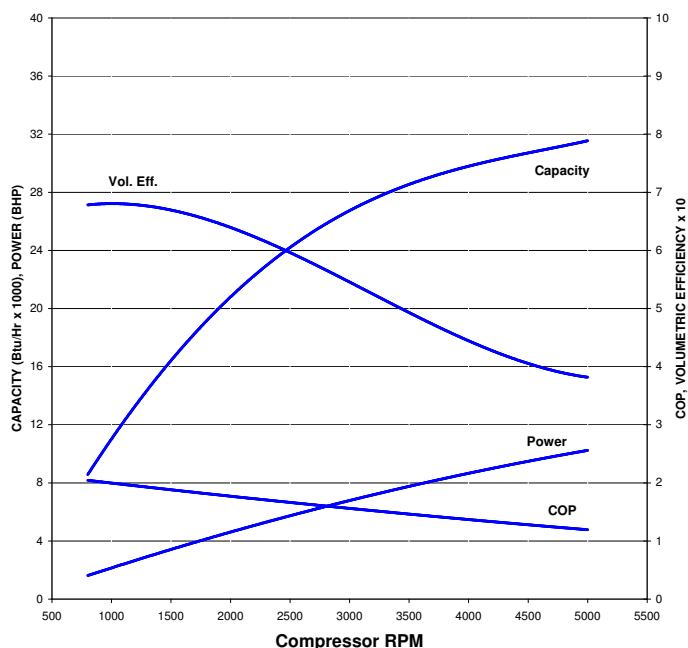


COMPRESSOR ASSEMBLY				COMPRESSOR		MANIFOLD		CLUTCH			
QUE PRODUCTS NUMBER	CROSS REFERENCE NUMBER	CROSS REFERENCE	CROSS REFERENCE	TYPE	MOUNT STYLE	FITTING TYPE	FITTING DESCRIPTION	PULLEY DIAMETER (MM)	PULLEY TYPE	NOTES	VOLTAGE (V)
QP16-1180	2521180	488-46011	435-56011	HD	Ear	Bolt	V - 3/4 X 7/8	135	2A	3E	12
QP16-1181	2521181	488-46015	435-56015	HD	Ear	Bolt	V - 3/4 X 7/8	135	2A	3E	24
QP16-1182	2521182	488-46017	435-56017	HD	Ear	Bolt	H - 3/4 X 7/8	135	2A	3E	24
QP16-1183	2521183	488-46018	435-56018	HD	Ear	Bolt	V - 3/4 X 7/8	125	2A	SL	12
QP16-1184	2521184	488-46019	435-56019	HD	Ear	Bolt	V - 3/4 X 7/8	123	6PV	3E	12
QP16-1185	2521185	488-46021	435-56021	HD	Ear	Monolithic	V - 3/4 X 7/8	135	2A	3E	12
QP16-1186	2521186	488-46030	435-56030	HD	Ear	Bolt	H - 3/4 X 7/8	135	2A	3E	12
QP16-1187	2521187	488-46043	435-56043	HD	Ear	Monolithic	V - 3/4 X 7/8	125	2A	SL	12
QP16-1189	2521189	488-46056	435-56056	HD	Ear	Monolithic	V - 3/4 X 7/8	135	2A	3E	24
QP16-1195	2521195	488-46120	435-56120	HD	Ear	Bolt	V - 3/4 X 7/8	123	8PV	3E	12
QP16-1196	2521196	488-46121	435-56121	HD	Ear	Monolithic	V - 3/4 X 7/8	123	8PV	3E	12
QP16-1197	2521197	488-46122	435-56122	HD	Ear	Bolt	H - 3/4 X 7/8	123	8PV	3E	12
QP16-1198	2521198	488-46210	435-56210	HD	Ear	Pad	H - Pad	135	2A	3E	12
QP16-1199	2521199	488-46212	435-56212	HD	Ear	Pad	H - Pad	135	2A	3E	24
QP16-1201	2521201	488-46222	435-56222	HD	Ear	Pad	H - Pad	125	2A	SL	12
QP16-1206	2521206	488-46234	435-56234	HD	Ear	Pad	H - Pad	123	8PV	3E	12
QP16-1299	2521299	488-46047	435-56047	HD	Ear	Monolithic	V - 3/4 X 7/8	123	6PV	3E	12
QP16-1300	2521300	N/A	N/A	HD	Ear	Monolithic	V - 3/4 X 7/8	123	6PV	3E	24
QP16-1344	2521344	488-46023	435-46023	HD	Ear	Bolt	V - 1 X 14	135	2A	3E	12
QP16-1345	2521345	488-46026	435-56026	HD	Ear	Bolt	V - 1 X 14	123	6PV	3E	12
QP16-1346	2521346	488-46028	435-56028	HD	Ear	Bolt	H - 1 X 14	135	2A	3E	12
QP16-1347	2521347	488-46036	435-56036	HD	Ear	Bolt	H - 3/4 X 7/8	125	2A	SL	12
QP16-1348	2521348	488-46068	435-56068	HD	Ear	Bolt	H - 3/4 X 7/8	123	6PV	3E	12
QP16-1350	2521350	488-46075	435-56075	HD	Ear	Bolt	H - 1 X 14	125	2A	SL	12
QP16-1351	2521351	488-46097	435-56097	HD	Ear	Bolt	H - 1 X 14	123	6PV	3E	12

QP-16HD COMPRESSOR EAR MOUNT

QP-16HD

Discharge: 220.4 psiG, Suction: 26.4 PsiG
S.H. / S.C. : 18 / 9 deg F



COMPRESSOR SPECIFICATIONS

Model	QP-16HD
Type	Swash Plate
Number of Cylinders	6
Bore	36 mm (1.42 in)
Stroke	26.7 mm (1.05 in)
Displacement	163 cm ³ (9.95 cu. in)
Permissible Speed	700-6000 rpm
Refrigerant	R-134a
Lubricant	PAG 46
Oil Charge	180+20 cm ³
Total Weight	7.2 kg (15.9 lbs)

MAGNETIC CLUTCH SPECIFICATIONS

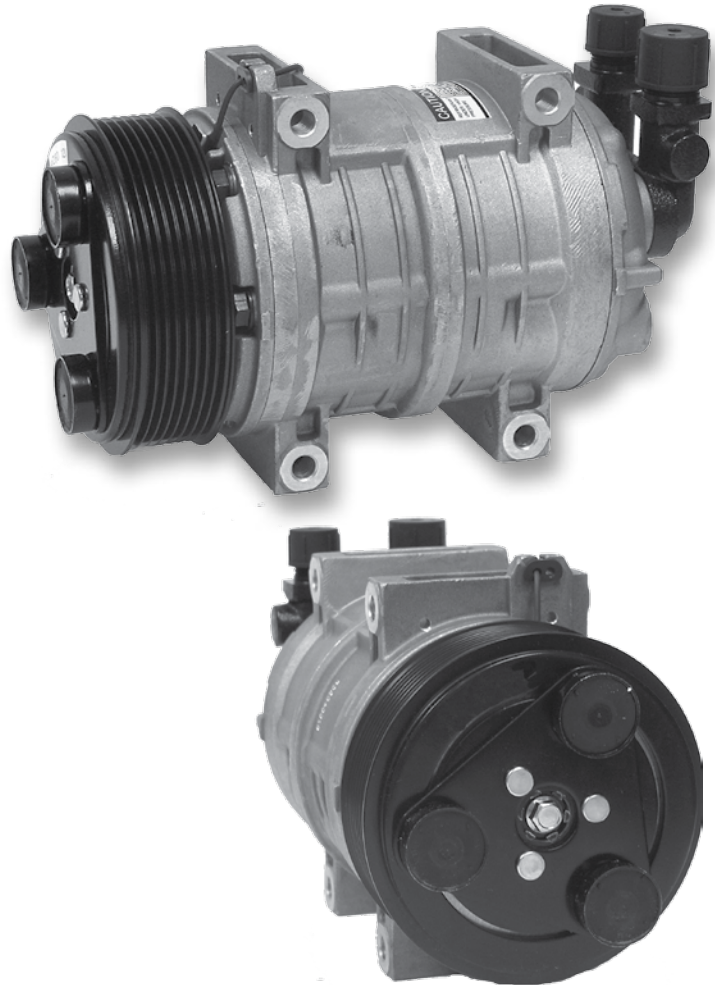
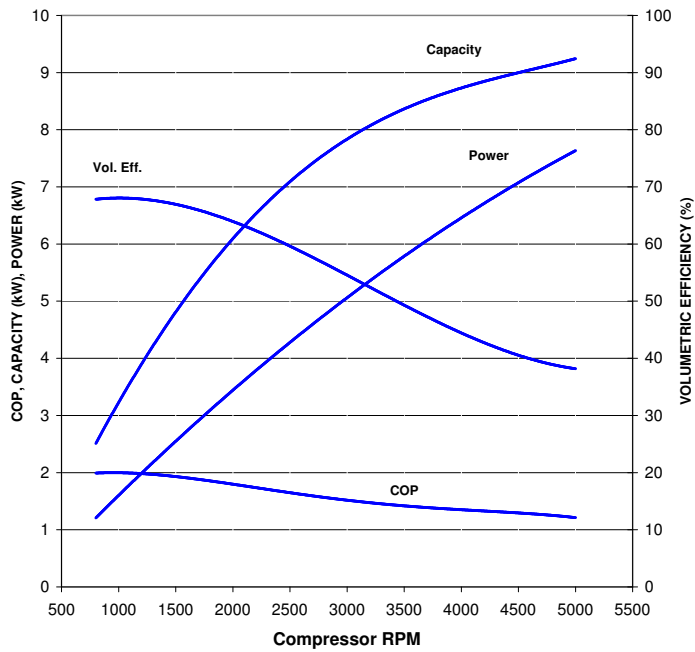
Type	Electromagnetic Single Plate Dry Clutch
Rated	Voltage 12 V DC or 24 V DC
Belt	2A Groove
Current Consumption	3.75 amperes (max)
Static Torque	Initial: 35 N•m (3.5 kgfm) After burnishing: 49 N•m (5 kgfm)
Rotation	CW/CCW
Weight of Clutch	2.3 kg (5.1 lbs)

COMPRESSOR ASSEMBLY				COMPRESSOR		MANIFOLD		CLUTCH			
QUE PRODUCTS NUMBER	CROSS REFERENCE NUMBER	CROSS REFERENCE	CROSS REFERENCE	TYPE	MOUNT STYLE	FITTING TYPE	FITTING DESCRIPTION	PULLEY DIAMETER (MM)	PULLEY TYPE	NOTES	VOLTAGE (V)
QP16-1353	2521353	488-46124	435-56124	HD	Ear	Bolt	V - 1 X 14	123	8PV	3E	12
QP16-1355	2521355	488-46126	435-56126	HD	Ear	Bolt	H - 1 X 14	123	8PV	3E	12
QP16-1357	2521357	488-46218	435-56218	HD	Ear	Pad	H - Pad	123	6PV	3E	12
QP16-1358	2521358	488-46220	435-56220	HD	Ear	Pad	H - Pad	123	6PV	3E	24
QP16-1445	2521445	488-46236	435-56236	HD	Ear	Pad	H - Pad	123	8PV	3E	24
QP16-1456	2521456	488-46029	435-56029	HD	Ear	Bolt	H - 1 X 14	135	2A	3E	24
QP16-1458	2521458	488-46079	435-56079	HD	Ear	Bolt	V - 1 X 14	135	2A	3E	24
QP16-1470	2521470	488-46131	435-56131	HD	Ear	Monolithic	V - 3/4 X 7/8	123	8PV	3E	24
QP16-1471	2521471	488-46129	435-56129	HD	Ear	Bolt	H - 1 X 14	123	8PV	3E	24
QP16-1472	2521472	488-46077	435-56077	HD	Ear	Bolt	V - 3/4 X 7/8	135	2A	3E	12
QP16-1514	2521514	488-46074	435-56074	HD	Ear	Bolt	V - 3/4 X 7/8	125	2A	SL	24
QP16-1520	2521520	488-46317	435-56317	HD	Ear	Bolt	H - 3/4 X 7/8	135	2A	SL	24
QP16-1523	2521523	488-46330	435-56330	HD	Ear	Bolt	H - 3/4 X 7/8	135	2A	SL	12
QP16-1579	2521579	488-46315	435-56315	HD	Ear	Bolt	V - 3/4 X 7/8	135	2A	SL	24
QP16-1594	2521594	488-46032	435-56032	HD	Ear	Bolt	V - 3/4 X 7/8	123	6PV	3E	24
QP16-1596	2521596	488-46059	435-56059	HD	Ear	Bolt	H - 3/4 X 7/8	135	2A	3E	12
QP16-1600	2521600	488-46312	435-56312	HD	Ear	Pad	H - Pad	135	2A	SL	24
QP16-1601	2521601	488-46241	435-56241	HD	Ear	Pad	H - Pad	125	2A	SL	24
QP16-1608	2521608	488-46356	435-56356	HD	Ear	Monolithic	V - 3/4 X 7/8	135	2A	SL	24
QP16-1616	2521616	488-46244	435-56244	HD	Ear	Pad	H - Pad	123	8PV	3E	12
QP16-1705	N/A	N/A	N/A	HD	Ear	Pad	H - Pad	123	10PV	3E	12
QP16-1707	N/A	N/A	N/A	HD	Ear	Pad	H - Pad	123	10PV	3E	12
QP16-1709	N/A	N/A	N/A	HD	Ear	Pad	H - Pad	123	10PV	3E	24
QP16-1710	N/A	N/A	N/A	HD	Ear	Bolt	V - 3/4 X 7/8	123	10PV	3E	24
QP16-1711	N/A	N/A	N/A	HD	Ear	Pad	H - Pad	123	10PV	3E	24
QP16-1192	2521192	488-46061	435-56061	HD	Ear	Bolt	V - 3/4 X 7/8	159	VG	3E	24
QP16-1134	2521194	488-46073	435-56073	HD	Ear	Bolt	H - 3/4 X 7/8	159	VG	3E	24
QP16-1204	2521204	488-46230	435-56230	HD	Ear	H - Pad	N/A	125	1A	SL,OH	12
QP16-1522	N/A	N/A	N/A	HD	Ear	Bolt	H - 3/4 X 7/8	123	8PV	SL	12
QP16-1581	N/A	N/A	N/A	HD	Ear	Bolt	V - 3/4 X 7/8	123	8PV	3E	12
QP16-1609	N/A	N/A	N/A	HD	Ear	Pad	H - Pad	135	2A	SL	12
QP16-1705	N/A	N/A	N/A	HD	Ear	Pad	H - Pad	123	10PV	3E	12
QP16-1706	N/A	N/A	N/A	HD	Ear	Bolt	V - 3/4 X 7/8	123	10PV	3E	12
QP16-1707	N/A	N/A	N/A	HD	Ear	Pad	H - Pad	123	10PV	3E	12
QP16-1709	N/A	N/A	N/A	HD	Ear	Pad	H - Pad	123	10PV	3E	24
QP16-1710	N/A	N/A	N/A	HD	Ear	Bolt	V - 3/4 X 7/8	123	10PV	3E	24
QP16-1711	N/A	N/A	N/A	HD	Ear	Pad	H - Pad	123	10PV	3E	24
QP16-1712	N/A	N/A	N/A	HD	Ear	Pad	H - Pad	123	6pv	3E	24
QP16-1739	N/A	N/A	N/A	HD	Ear	Bolt	3/4 x 7/8	135	2A	SL	24
QP16-1740	N/A	N/A	N/A	HD	Ear	Bolt	3/4 x 7/8	123	6PV	SL	24

QP-16HD COMPRESSOR DIRECT MOUNT

QP-16HD

Discharge: 1.52 MPag, Suction: .182 MPag
S.H. / S.C. : 10 / 5 deg K



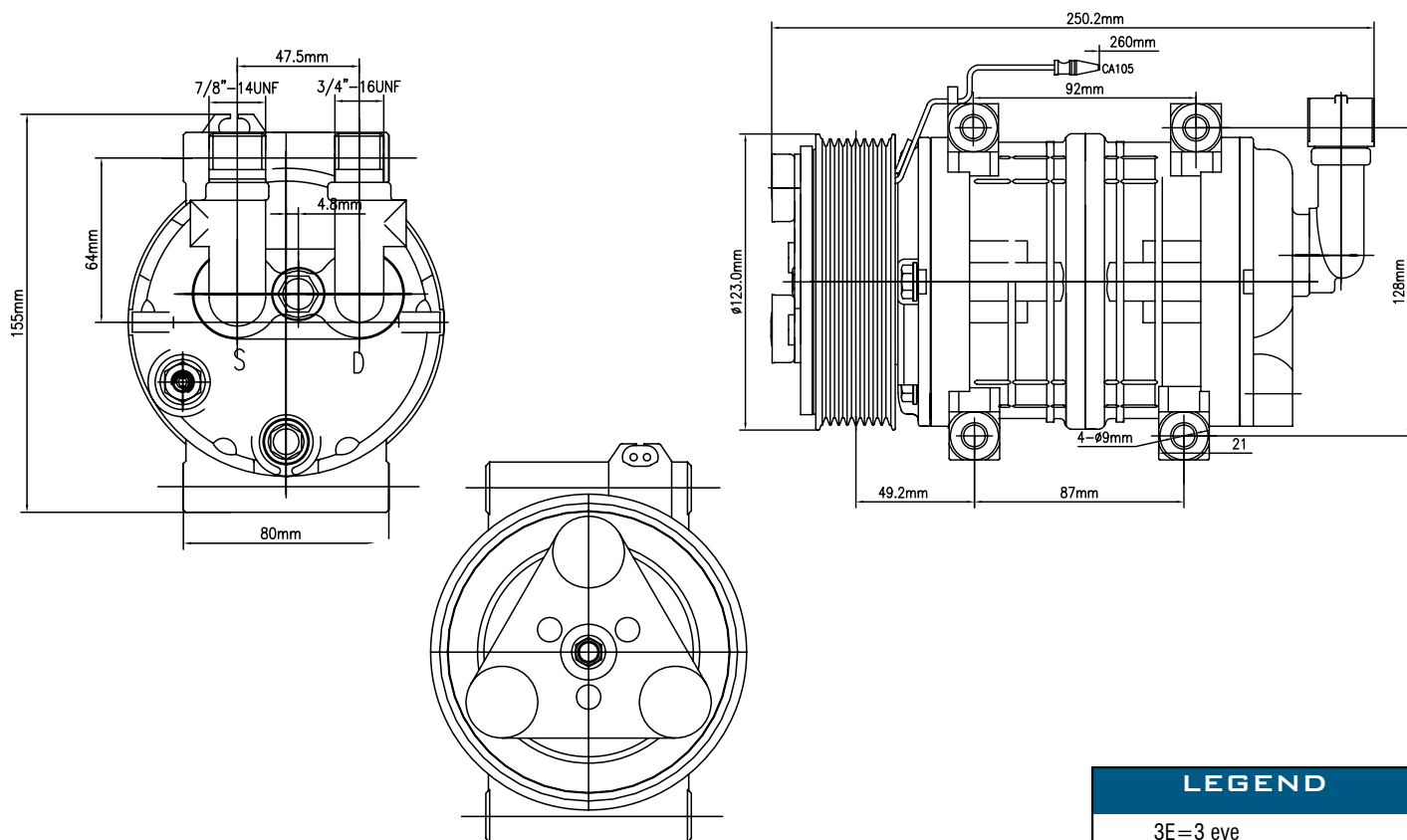
COMPRESSOR SPECIFICATIONS

Model	QP-16HD Direct Mount
Type	Swash Plate
Number of Cylinders	6
Bore	36 mm (1.42 in)
Stroke	26.7 mm (1.05 in)
Displacement	163 cm ³ (9.95 cu. in)
Permissible Speed	700-6000 rpm
Refrigerant	R-134a
Lubricant	PAG 46
Oil Charge	180+20 cm ³
Total Weight	7.2 kg (15.9 lbs)

MAGNETIC CLUTCH SPECIFICATIONS

Type	Electromagnetic Single Plate Dry Clutch
Rated	Voltage 12 V DC or 24 V DC
Belt	Ply "V" 8K Type
Current Consumption	3.75 amperes (max)
Static Torque	Initial: 35 N•m (3.5 kgfm) After burnishing: 49 N•m (5 kgfm)
Rotation	CW/CCW
Weight of Clutch	2.3 kg (5.1 lbs)

QP-16HD



LEGEND

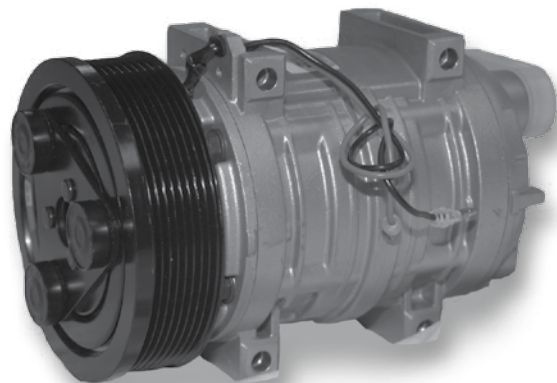
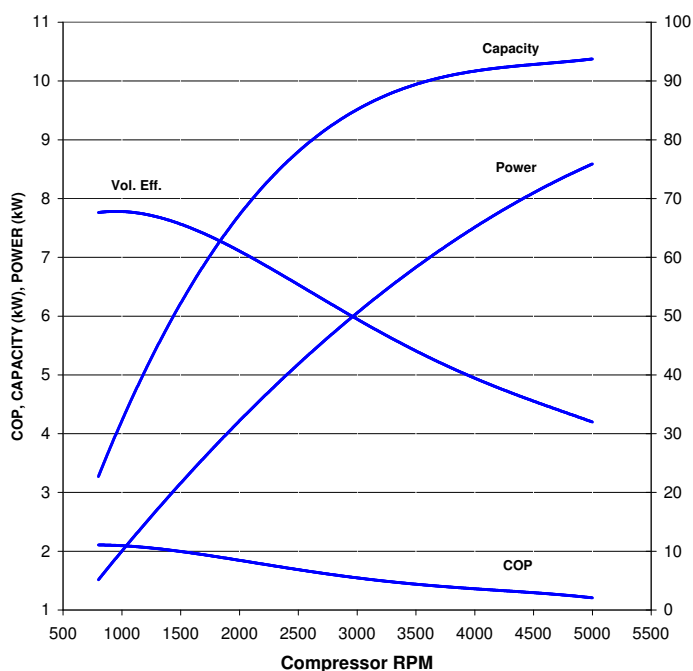
3E=3 eye
SL=Spring Leaf
SC=Special Connector

COMPRESSOR ASSEMBLY				COMPRESSOR		MANIFOLD		CLUTCH			
QUE PRODUCTS NUMBER	CROSS REFERENCE NUMBER	CROSS REFERENCE	CROSS REFERENCE	TYPE	MOUNT STYLE	FITTING TYPE	FITTING DESCRIPTION	PULLEY DIAMETER (MM)	PULLEY TYPE	NOTES	VOLTAGE (V)
QP16-1641	2521641	N/A	N/A	HD	Direct	Bolt	V - 3/4 X 7/8	123	8PV	3E	12
QP16-1661	2521661	N/A	N/A	HD	Direct	Bolt	V - 3/4 X 7/8	123	8PV	3E	24
QP16-1665	2521665	N/A	N/A	HD	Direct	Bolt	H - 3/4 X 7/8	123	8PV	3E	24
QP16-1672	2521672	N/A	N/A	HD	Direct	Bolt	V - 3/4 X 7/8	135	2A	3E	12
QP16-1677	2521677	N/A	N/A	HD	Direct	Bolt	H - 3/4 X 7/8	123	8PV	3E	12
QP16-1685	2521685	N/A	N/A	HD	Direct	Bolt	H - 3/4 X 7/8	135	2A	3E	24
QP16-1686	2521686	N/A	N/A	HD	Direct	Pad	H - Pad	135	2A	3E	12
QP16-1687	2521687	N/A	N/A	HD	Direct	Pad	H - Pad	123	8PV	3E	12
QP16-1716	N/A	N/A	N/A	HD	Direct	Bolt	3/4 X 7/8	123	10PV	3E	12
QP16-1717	N/A	N/A	N/A	HD	Direct	Pad	H - Pad	123	8PV	SL	12
QP16-1719	N/A	N/A	N/A	HD	Direct	Bolt	H - 3/4 X 7/8	135	2A	3E	12
QP16-1723	N/A	N/A	N/A	HD	Direct	Bolt	V - 3/4 X 7/8	123	8PV	SL, SC	12

QP-21 HD COMPRESSOR DIRECT MOUNT

QP-21HD

Discharge: 1.52 MPag, Suction: .182 MPag
S.H. / S.C. : 10 / 5 deg K



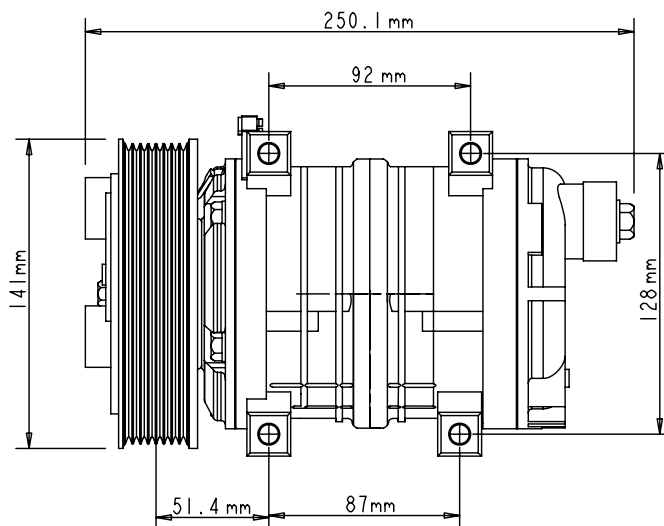
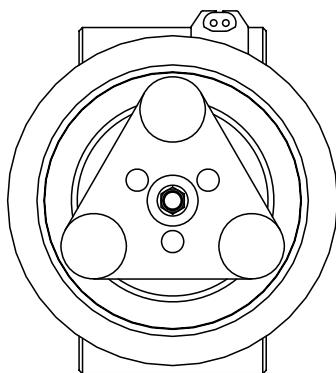
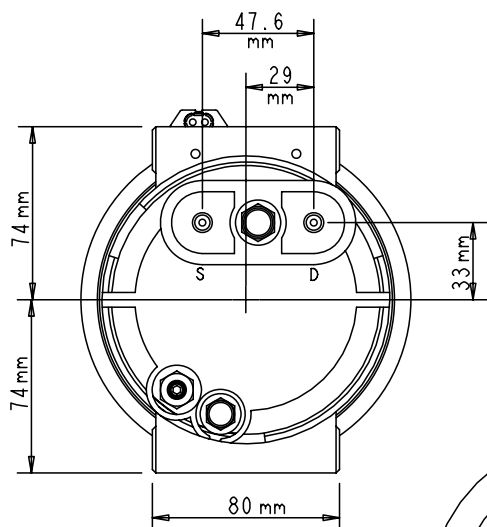
COMPRESSOR SPECIFICATIONS

Model	QP-21 HD Direct Mount
Type	Swash Plate
Number of Cylinders	10
Bore	32 mm (1.26 in.)
Stroke	26.7 mm (1.05 in.)
Displacement	215 cm ² (13 cu. in)
Permissible Speed	700-6000 rpm
Refrigerant	R-134a
Lubricant	PAG 46
Oil Charge	180+20 cm ³
Total Weight	8.3 kg (18.2 lbs)

MAGNETIC CLUTCH SPECIFICATIONS

Type	Electromagnetic Single Plate Dry Clutch
Rated	Voltage 12 V DC or 24 V DC
Belt	Belt Ply "V" 8K Type
Current Consumption	3.75 amperes (max)
Static Torque	59 N•m (43.5 ft. lb)
Rotation	CW/CCW
Weight of Clutch	3.1 kg (6.8 lbs)

QP-21HD



LEGEND

3E=3 eye
SL=Spring Leaf

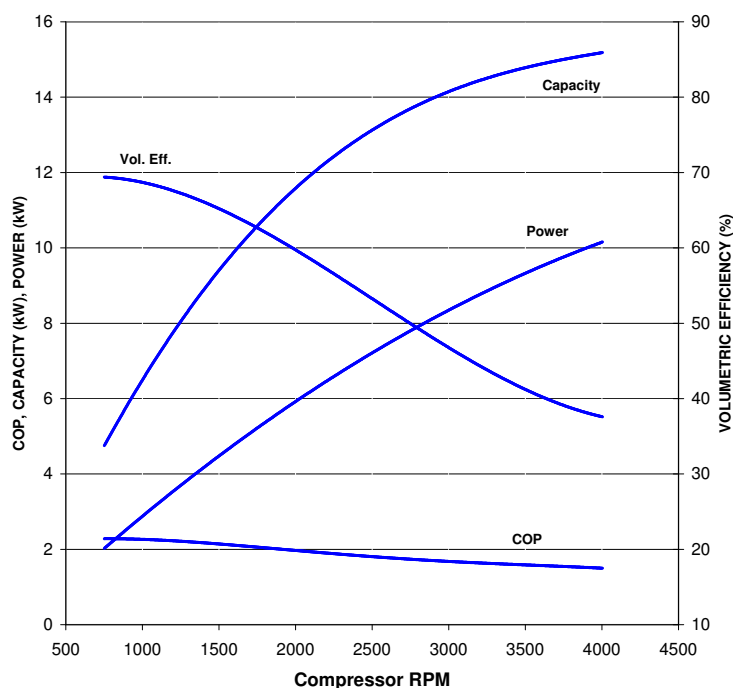
COMPRESSOR ASSEMBLY				COMPRESSOR		MANIFOLD		CLUTCH			
QUE PRODUCTS NUMBER	CROSS REFERENCE NUMBER	CROSS REFERENCE	CROSS REFERENCE	TYPE	MOUNT STYLE	FITTING TYPE	FITTING DESCRIPTION	PULLEY DIAMETER (MM)	PULLEY TYPE	NOTES	VOLTAGE (V)
QP21-1562	2521562	488-47244	N/A	HD	Direct	Pad	H - Pad	141	8PV	3E	12
QP21-1563	2521563	488-47246	N/A	HD	Direct	Pad	H - Pad	141	8PV	3E	24
QP21-1564	2521564	488-47240	N/A	HD	Direct	Pad	H - Pad	145	2A	3E	12
QP21-1565	2521565	488-47242	N/A	HD	Direct	Pad	H - Pad	145	2A	3E	24
QP21-1657	2521657	N/A	N/A	HD	Direct	Pad	H - Pad	127 *	8PV	3E	12
QP21-1700	N/A	N/A	N/A	HD	Direct	Pad	H - Pad	127 *	10PV	3E	12
QP21-1701	N/A	N/A	N/A	HD	Direct	Pad	H - Pad	127 *	10PV	3E	24
QP21-1704	N/A	N/A	N/A	HD	Direct	Pad	H - Pad	127 *	8PV	3E	24
QP21-1713	N/A	N/A	N/A	HD	Direct	Pad	H - Pad	150	1B	3E	24
QP21-1731	N/A	N/A	N/A	HD	Direct	Pad	H - Pad	127*	10PV	SL	12
QP21-1733	N/A	N/A	N/A	HD	Direct	Pad	H - Pad	145	2A	SL	12
QP21-1734	N/A	N/A	N/A	HD	Direct	Pad	H - Pad	145	2A	SL	24
QP21-1742	N/A	N/A	N/A	HD	Direct	Pad	H - Pad	127*	6PV	SL	24

* 49MM Gauge line

QP-31 HD COMPRESSOR DIRECT MOUNT

QP-31

Charge: 1.52 MPa, Suction: .182 MPa
S.H. / S.C. : 10 / 5 deg K



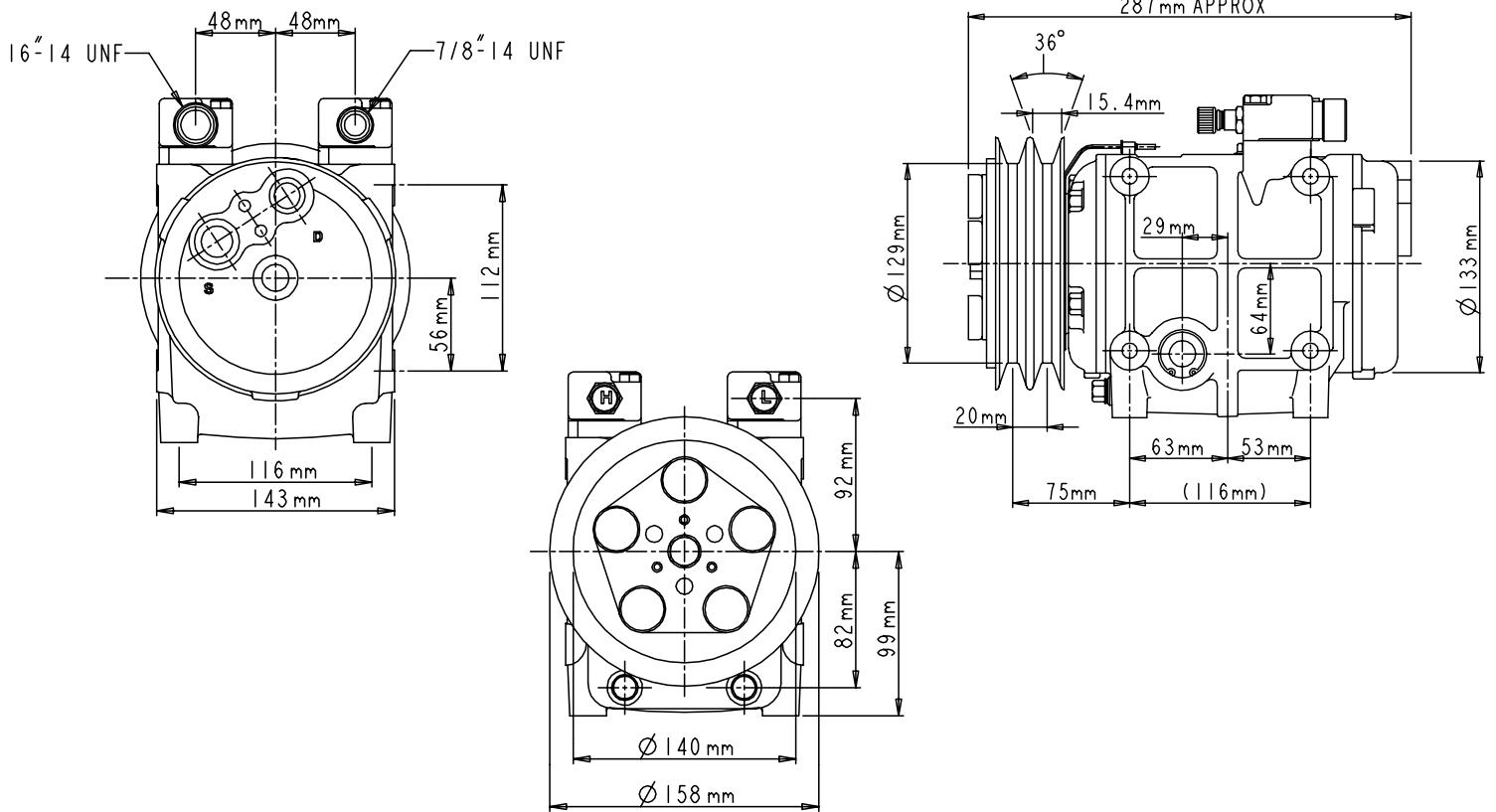
COMPRESSOR SPECIFICATIONS

Model	QP-31HD Direct Mount
Type	Swash Plate
Number of Cylinders	10
Bore	36 mm (1.42 in)
Stroke	30.7 mm (1.21 in)
Displacement	313 cm ³ (19.1 cu. in)
Maximum Speed	6000 rpm
Refrigerant	R-134a
Lubricant	PAG 46
Oil Charge	500cc (16.9 fl. oz.)
Total Weight	14.1 kg (31 lbs)

MAGNETIC CLUTCH SPECIFICATIONS

Type	Electromagnetic Single Plate Dry Clutch
Rated	Voltage 12 V DC or 24 V DC
Belt	Poly "V" 8K Type
Current Consumption	46 Watts @ 25 C
Static Torque	78.1 N•m (8.0 kgf-m, 58 ft-lb)
Rotation	Clockwise, viewed from clutch
Weight of Clutch	4.6 kg (10 lbs)

QP-31 HD



LEGEND
5E=5 eye

COMPRESSOR ASSEMBLY				COMPRESSOR		MANIFOLD		CLUTCH			
QUE PRODUCTS NUMBER	CROSS REFERENCE NUMBER	CROSS REFERENCE	CROSS REFERENCE	TYPE	MOUNT STYLE	FITTING TYPE	FITTING DESCRIPTION	PULLEY DIAMETER (MM)	PULLEY TYPE	NOTES	VOLTAGE (V)
QP31-1209	2521209	488-46500	N/A	HD	Direct	Bolt	1-1/16 x 7/8	152	2A	5E	12
QP31-1210	2521210	488-46510	N/A	HD	Direct	Bolt	1-1/16 x 7/8	152	2A	5E	24
QP31-1211	2521211	488-46520	N/A	HD	Direct	Bolt	1-1/16 x 7/8	152	2B	5E	12
QP31-1212	2521212	488-46530	N/A	HD	Direct	Bolt	1-1/16 x 7/8	152	2B	5E	24
QP31-1213	2521213	488-46540	N/A	HD	Direct	Bolt	1-1/16 x 7/8	152	8PV	5E	12
QP31-1214	2521214	488-46550	N/A	HD	Direct	Bolt	1-1/16 x 7/8	152	8PV	5E	24
QP31-1702	N/A	N/A	N/A	HD	Direct	Bolt	1-1/16 x 7/8	152	10PV	5E	12
QP31-1703	N/A	N/A	N/A	HD	Direct	Bolt	1-1/16 x 7/8	152	10PV	5E	24
NEW OUR QP 31 COUNTERCLOCKWISE ROTATION											
QP31-1770	N/A	N/A	N/A	HD	Direct	Bolt	1 - 1/16 x 7/8	152	2A	5E	24
NEW OUR QP 31 Rear Pad Compressor											
QP31-1749	N/A	N/A	N/A	HD	Direct	Pad	N/A	152	2A	5E	12

QUE CLUTCHES & SPARE PARTS

QP CLUTCH DESCRIPTION AND PART NUMBERS					
COMPRESSOR	CLUTCH P/N	MM		VOLTAGE	TYPE
QP 08-16	QPCL-0151	135	2A	12 V-1W	3E
QP 08-16	QPCL-0144	120	6PV	12 V	3E
QP 08-16	QPCL-0155	120	8PV	12 V	3E
QP 08-16	QPCL-0150	135	2A	24 V	3E
QP 08-16	QPCL-0153	120	6PV	24 V	3E
QP 08-16	QPCL-0156	120	8PV	24 V	3E
QP 08-16	QPCL-0188	123	10PV	24 V	3E
QP08-16	QPCL-0147	126	1A	12 V	SL
QP08-16	QPCL-0148	159	VG	12 V	3E
QP08-16	QPCL-0151	135	2A	12 V	3E
QP08-16	QPCL-0154	119	PV4	12 V	3E
QP08-16	QPCL-0157	135	2A	12 V	SL
QP08-16	QPCL-0162	123	8PV	12V	SL
QP08-16	QPCL-0190	135	2A	24 V	SL
QP08-16	QPCL-0228	135	2A	24 V	SL
QP 21	QPCL-0275	127 2 WIRE	8PV	12 V-2W	3E
QP 21	QPCL-0183	150 2 WIRE	1B	12 V-2W	3E
QP 21	QPCL-0209	145 2 WIRE	2A	24 V-2W	3E
QP 21	QPCL-0215	141 2 WIRE	8PV	24 V-2W	3E
QP 21	QPCL-0184	127 2 WIRE	10PV	24 V-2W	3E
QP 21	QPCL-0185	127 2 WIRE	8PV	24 V-2W	3
QP 21	QPCL-0180	127	10PV	12 - 2W	3E
QP 21	QPCL-0183	150	1B	12 - 2 W	3E
QP 21	QPCL-0184	127	10PV	24 - 2 W	3E
QP 21	QPCL-0185	127	8PV	24 - 2 W	3E
QP 21	QPCL-0186	150 2 WIRE	1B	24 V	3E
QP 21	QPCL-0209	145	2A	24 - 2 W	3E
QP 21	QPCL-0211	145	2A	12 - 2 W	3E
QP 21	QPCL-0213	141	8PV	12 - 2 W	3E
QP 21	QPCL-0215	141	8PV	24V - 2 W	3E
QP 21	QPCL-0275	127	8PV	12V - 2 W	3E
QP 31	QPCL-0165	152	2A	12 V-1W	5E
QP 31	QPCL-0166	158	2B	12 V	5E
QP 31	QPCL-0168	156	8PV	12 V	5E
QP 31	QPCL-0181	156	10PV	12 V	5E
QP 31	QPCL-0164	152	2A	24 V	3E
QP 31	QPCL-0167	158	2B	24 V	5E
QP 31	QPCL-0169	156	8PV	24 V	5E
QP 31	QPCL-0182	156	10PV	24 V	5E
QP 31	QPCL-0164	152	2A	24V	5E
QP 31	QPCL-0165	152	2A	12V	5E
QP 31	QPCL-0166	158	2B	12V	5E
QP 31	QPCL-0167	158	2B	24V	5E
QP 31	QPCL-0168	156	8PV	12V	5E
QP 31	QPCL-0169	156	8PV	24V	5E
QP 31	QPCL-0181	156	10PV	12V	5E
QP 31	QPCL-0182	156	10PV	24V	5E
QP 31	QPCL-1702	152	10PV	12V	5E

DESCRIPTION	QUE PRODUCTS P/N
Vertical Orientation	QPF-0103
3/4 in. Discharge/ 7/8 in. Suction	
Male Thread w/O-Ring	
Horizontal Orientation	QPF-0105
3/4 in. Discharge/ 7/8 in. Suction	
Male Thread w/O-Ring	
Vertical Orientation	QPF-0130
1 X 14 in. Discharge/ 1 X 14 in. Suction	
Male Thread w/O-Ring	
Horizontal Orientation	QPF-0102
1 X 14 in. Discharge/ 1 X 14 in. Suction	
Male Thread w/O-Ring	

ARMATURE PART NUMBERS		
COMPRESSOR	Armature P/N	TYPE
QP08-16	QPA-0200	3 EYE
QP08-16	QPA-0081	Spring Leaf
QP 21	QPA-0196	Spring Leaf
QP 21	QPA-0198	3 EYE
QP 31	QPA-0201	5 EYE

COILS		
COMPRESSOR	COIL P/N	VOLTAGE
QP 08-16	QPCO-0103	12
QP 08-16	QPCO-0104	24
QP 21	QPCO-0110	12
QP 21	QPCO-0111	24
QP 31	QPCO-0105	24
QP 31	QPCO-0106	12

ADDITIONAL PRODUCTS FROM T/CCI AND QUE PRODUCTS

SILVER RHINO 10SR18 SWASH PLATE COMPRESSORS



QP7H15 HEAVY DUTY TRUCK COMPRESSORS



QP7H13 WOBBLE PLATE COMPRESSORS



QP5H09 WOBBLE PLATE COMPRESSORS



QP5H11 WOBBLE PLATE COMPRESSORS



QP5H14 WOBBLE PLATE COMPRESSORS



QP7V16 VARIABLE DISPLACEMENT COMPRESSORS



QPV5 VARIABLE DISPLACEMENT COMPRESSORS



QP10PA17 SWASH PLATE COMPRESSORS



MODEL 210 RECIPROCATING COMPRESSORS



*HEAVY DUTY CLUTCHES FOR
210 RECIPROCATING COMPRESSORS*



INTRODUCING QUE PRODUCT'S NEW XD HEAVY DUTY COMPRESSORS FOR R-404A REFRIGERANT

XD R-404A COMPRESSOR

TCCI/QUE XD R-404A COMPRESSOR LIST AND CROSS REFERENCE									
TCCI/QUE PRODUCTS NUMBER	COMPRESSOR TYPE	MOUNT STYLE	FITTING TYPE	FITTING DESCRIPTION	PULLEY DIAMETER (MM)	PULLEY TYPE	CLUTCH VOLTAGE (V)	DRY	R134A VERSION
QP 13 XD LIST									
QP13XD-1149	TM 13XD	Ear	Pad	N/A	123	8PV	24	NO OIL	N/A
QP13XD-1223	TM 13XD	Ear	Pad	N/A	135	2A	12	NO OIL	QP13-1363
QP13XD-1225	TM 13XD	Ear	Pad	N/A	123	PV8	12	NO OIL	QP13-1148
QP13XD-1231	TM 13XD	Ear	Bolt	V-3/4 X 7/8	123	6PV	24	NO OIL	N/A
QP13XD-1232	TM 13XD	Ear	Bolt	V-3/4 X 7/8	123	PV6	12	NO OIL	QP13-1144
QP13XD-1233	TM 13XD	Ear	Pad	V-3/4 X 7/8	135	2A	12	NO OIL	QP13-1145
QP13XD-1234	TM 13XD	Ear	Bolt	V-3/4 X 7/8	135	2A	24	NO OIL	QP13-1291
QP13XD-1235	TM 13XD	Ear	Bolt	V-3/4 X 7/8	123	8PV SL	12	NO OIL	QP13-1150
QP13XD-1236	TM 13XD	Ear	Bolt	V-3/4 X 7/8	123	6PV SL	12	NO OIL	QP13-1151
QP13XD-1395	TM 13XD	Ear	Pad	N/A	123	PV6	24	NO OIL	QP13-1502
QP13XD-1625	TM 13XD	Ear	Bolt	H-3/4 X 7/8	123	PV8 SL	12	NO OIL	QP13-1689
QP 15 XD LIST									
QP15XD-1174	TM 15XD	Ear	Pad	N/A	135	2A	12	NO OIL	QP15-1387
QP15XD-1746	TM 15XD	Ear	MONO	N/A	123	8PV	12	NO OIL	QP15-1172
QP15XD-1762	TM 15XD	Ear	MONO	N/A	125	2A SL	12	NO OIL	QP15-1161
QP15XD-1222	TM 15XD	Ear	Pad	N/A	135	2A	24	NO OIL	QP15-1175
QP15XD-1226	TM 15XD	Ear	Pad	N/A	123	8PV	12	NO OIL	QP15-1178
QP15XD-1179	TM 15XD	Ear	Pad	N/A	123	8PV	24	NO OIL	QP15-1576
QP15XD-1632	TM 15XD	Ear	Bolt	V-3/4 X 7/8	125	1A SL,OH	12	NO OIL	QP15-1166
QP15XD-1237	TM 15XD	Ear	Bolt	V-3/4 X 7/8	135	2A	12	NO OIL	QP15-1152
QP15XD-1239	TM 15XD	Ear	Bolt	V-3/4 X 7/8	123	6PV	12	NO OIL	QP15-1156
QP15XD-1241	TM 15XD	Ear	Bolt	V-3/4 X 7/8	123	8PV	12	NO OIL	QP15-1171
QP15XD-1396	TM 15XD	Ear	Pad	N/A	123	6PV	24	NO OIL	N/A
QP15XD-1635	TM 15XD	Ear	Bolt	H-3/4 X 7/8	135	2A	12	NO OIL	QP15-1479
QP15XD-1620	TM 15XD	Direct	Bolt	H-3/4 X 7/8	123	8PV	12	NO OIL	QP15-1281
QP15XD-1624	TM 15XD	Ear	Bolt	H-3/4 X 7/8	123	8PV SL	12	NO OIL	QP15-1340
QP15XD-1761	TM 15XD	Ear	Bolt	V-3/4 X 7/8	123	8PV SL	12	NO OIL	QP15-1512
QP15XD-1636	TM 15XD	Ear	Bolt	V-3/4 X 7/8	123	8PV	24	NO OIL	QP15-1333
QP15XD-1633	TM 15XD	Ear	Bolt	H-3/4 X 7/8	123	8PV SL	24	NO OIL	N/A
QP15XD-1396	TM 15XD	Ear	Pad	N/A	123	6PV	24	NO OIL	N/A
QP15XD-1238	TM 15XD	Ear	Bolt	V-3/4 X 7/8	135	2A	24	NO OIL	QP15-1153
QP15XD-1240	TM 15XD	Ear	Bolt	V-3/4 X 7/8	123	6PV	24	NO OIL	QP15-1319
QP15XD-1765	TM15XD	Ear	Bolt	V-3/4 X 7/8	135	2A SL	12	NO OIL	N/A
QP15XD-1766	TM15XD	Ear	Bolt	V-3/4 X 7/8	135	2A SL	24	NO OIL	N/A

XD R-404A COMPRESSOR

TCCI/QUE XD R-404A COMPRESSOR LIST AND CROSS REFERENCE									
TCCI/QUE PRODUCTS NUMBER	COMPRESSOR TYPE	MOUNT STYLE	FITTING TYPE	FITTING DESCRIPTION	PULLEY DIAMETER (MM)	PULLEY TYPE	CLUTCH VOLTAGE (V)	DRY	R134A VERSION
QP 16 XD LIST									
QP16XD-1203	TM 16XD	Ear	Pad	N/A	159	VG	24	NO OIL	QP16-1447
QP16XD-1220	TM 16XD	Ear	Pad	N/A	135	2A	24	NO OIL	QP16-1199
QP16XD-1242	TM 16XD	Ear	Bolt	V-3/4 X 7/8	135	2A	12	NO OIL	QP16-1180
QP16XD-1243	TM 16XD	Ear	Bolt	V-3/4 X 7/8	135	2A	24	NO OIL	QP16-1181
QP16XD-1244	TM 16XD	Ear	Bolt	V-3/4 X 7/8	123	6PV	12	NO OIL	QP16-1184
QP16XD-1245	TM 16XD	Ear	Bolt	V-3/4 X 7/8	123	6PV	24	NO OIL	QP16-1594
QP16XD-1246	TM 16XD	Ear	Bolt	V-3/4 X 7/8	159	VG	12	NO OIL	QP16-1193
QP16XD-1247	TM 16XD	Ear	Bolt	V-3/4 X 7/8	123	8PV	12	NO OIL	QP16-1195
QP16XD-1248	TM 16XD	Ear	Pad	N/A	135	2A	12	NO OIL	QP16-1198
QP16XD-1249	TM 16XD	Ear	Bolt	V-3/4 X 7/8	123	8PV SL	12	NO OIL	N/A
QP16XD-1397	TM 16XD	Ear	Pad	N/A	123	6PV	24	NO OIL	QP16-1358
QP16XD-1557	TM 16XD	Ear	Pad	N/A	123	8PV	12	NO OIL	QP16-1206
QP16XD-1634	TM 16XD	Ear	Bolt	H-3/4 X 7/8	123	8PV	24	NO OIL	QP16-1352
QP16XD-1763	TM 16XD	Ear	MONO	N/A	123	8PV	12	NO OIL	QP16-1196
QP16XD-1764	TM 16XD	Ear	MONO	N/A	123	8PV	24	NO OIL	QP16-1470

*Our XD Compressors are shipped "dry". The proper amount of POE (ester) oil must be added at the time of installation.



SALES CONTACT

4763 WICKLOW DRIVE
FRISCO, TX 75035
972-731-9494 OFFICE
214-908-2560 MOBILE
972-731-9495 FAX

USA R&D
FACILITY
& WAREHOUSE

2120 NORTH 22ND STREET
DECATUR, IL 62526
217-422-0055

EUROPEAN OFFICE
& WAREHOUSE

BWD AUTOMOTIVE GMBH
SCHNACKENBURGALLEE 47 - 51
22525 HAMBURG, GERMANY
+49 (0)40-89 05 92 0 PHONE
+49 (0)40-89 05 92 24 FAX

CHINA
MANUFACTURING
FACILITY

NINGBO TCCI
MANUFACTURING CO. LTD.
1226 JUXIAN ROAD
NINGBO, CHINA 315040

SALES@QUEPRODUCTS.COM
WWW.QUE-PRODUCTS.COM

